

A12879

Leader in Biomolecular Solutions for Life Science



## SLC17A7 Rabbit pAb

Catalog No.: A12879

2 Publications

### Basic Information

#### Observed MW

62kDa

#### Calculated MW

62kDa

#### Category

Mouse Monoclonal Antibody

#### Applications

WB, IF/ICC, ELISA

#### Cross-Reactivity

Human, Mouse

### Background

The protein encoded by this gene is a vesicle-bound, sodium-dependent phosphate transporter that is specifically expressed in the neuron-rich regions of the brain. It is preferentially associated with the membranes of synaptic vesicles and functions in glutamate transport. The protein shares 82% identity with the differentiation-associated Na-dependent inorganic phosphate cotransporter and they appear to form a distinct class within the Na<sup>+</sup>/Pi cotransporter family.

### Recommended Dilutions

WB	1:500 - 1:1000
IF/ICC	1:50 - 1:200

### Immunogen Information

#### Gene ID

57030

#### Swiss Prot

Q9P2U7

#### Immunogen

Recombinant fusion protein containing a sequence corresponding to amino acids 461-560 of human SLC17A7 (NP\_064705.1).

#### Synonyms

BNPI; VGLUT1; SLC17A7

### Contact



[www.abclonal.com](http://www.abclonal.com)

### Product Information

#### Source

Rabbit

#### Isotype

IgG

#### Purification

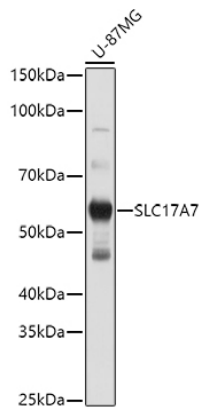
Affinity purification

#### Storage

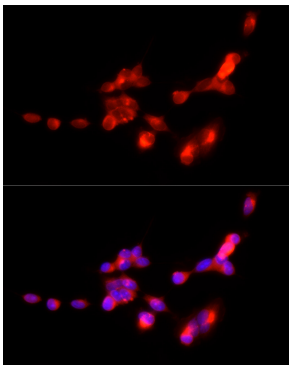
Store at -20°C. Avoid freeze / thaw cycles.

Buffer: PBS with 0.05% proclin300, 50% glycerol, pH7.3.

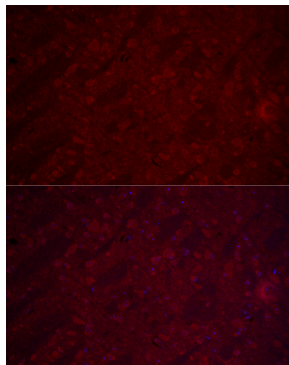
## Validation Data



Western blot analysis of extracts of U-87MG cells, using SLC17A7 antibody (A12879) at 1:1000 dilution.  
Secondary antibody: HRP Goat Anti-Rabbit IgG (H+L) (A5014) at 1:10000 dilution.  
Lysates/proteins: 25µg per lane.  
Blocking buffer: 3% nonfat dry milk in TBST.  
Detection: ECL Basic Kit (RM00020).  
Exposure time: 10s.



Immunofluorescence analysis of SH-SY5Y cells using SLC17A7 Rabbit pAb (A12879) at dilution of 1:200 (40x lens). Blue: DAPI for nuclear staining.



Immunofluorescence analysis of mouse brain cells using SLC17A7 Rabbit pAb (A12879) at dilution of 1:200 (40x lens). Blue: DAPI for nuclear staining.