

A12850

Leader in Biomolecular Solutions for Life Science



## STYXL1 Rabbit pAb

Catalog No.: A12850

### Basic Information

**Observed MW**

36kDa

**Calculated MW**

36kDa

**Category**

Polyclonal Antibody

**Applications**

WB, ELISA

**Cross-Reactivity**

Human, Mouse

### Background

Enables protein phosphatase binding activity; protein phosphatase inhibitor activity; and pseudophosphatase activity. Involved in several processes, including negative regulation of phosphoprotein phosphatase activity; negative regulation of stress granule assembly; and positive regulation of intrinsic apoptotic signaling pathway. Located in mitochondrion.

### Recommended Dilutions

WB 1:500 - 1:2000

### Immunogen Information

**Gene ID**

51657

**Swiss Prot**

Q9Y6J8

**Immunogen**

Recombinant fusion protein containing a sequence corresponding to amino acids 1-120 of human STYXL1 (NP\_001304714.1).

**Synonyms**

DUSP24; MKSTYX; MK-STYX; STYXL1

### Contact



[www.abclonal.com](http://www.abclonal.com)

### Product Information

**Source**

Rabbit

**Isotype**

IgG

**Purification**

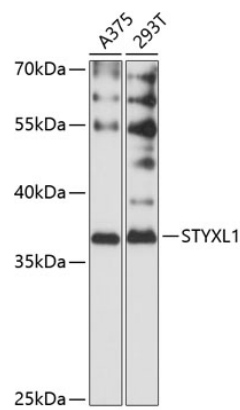
Affinity purification

**Storage**

Store at -20°C. Avoid freeze / thaw cycles.

Buffer: PBS with 0.01% thimerosal, 50% glycerol, pH7.3.

Validation Data



Western blot analysis of various lysates using STYXL1 Rabbit pAb (A12850) at 1:3000 dilution.  
Secondary antibody: HRP Goat Anti-Rabbit IgG (H+L) (AS014) at 1:10000 dilution.  
Lysates/proteins: 25µg per lane.  
Blocking buffer: 3% nonfat dry milk in TBST.  
Detection: ECL Basic Kit (RM00020).  
Exposure time: 60s.