

A12820

Leader in Biomolecular Solutions for Life Science



SLC44A3 Rabbit pAb

Catalog No.: A12820

Basic Information

Observed MW

74kDa

Calculated MW

74kDa

Category

Polyclonal Antibody

Applications

WB, ELISA

Cross-Reactivity

Human

Background

Predicted to enable transmembrane transporter activity. Predicted to be involved in transmembrane transport. Predicted to be located in plasma membrane. Predicted to be active in membrane.

Recommended Dilutions

WB 1:500 - 1:2000

Immunogen Information

Gene ID

126969

Swiss Prot

Q8N4M1

Immunogen

Recombinant fusion protein containing a sequence corresponding to amino acids 60-220 of human SLC44A3 (NP_001107578.1).

Synonyms

CTL3; SLC44A3

Contact



www.abclonal.com

Product Information

Source

Rabbit

Isotype

IgG

Purification

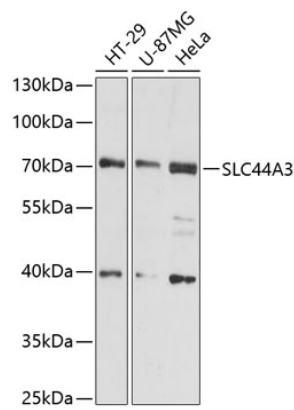
Affinity purification

Storage

Store at -20°C. Avoid freeze / thaw cycles.

Buffer: PBS with 0.01% thimerosal, 50% glycerol, pH 7.3.

Validation Data



Western blot analysis of various lysates using SLC44A3 Rabbit pAb (A12820) at 1:3000 dilution.
Secondary antibody: HRP Goat Anti-Rabbit IgG (H+L) (A5014) at 1:10000 dilution.
Lysates/proteins: 25µg per lane.
Blocking buffer: 3% nonfat dry milk in TBST.
Detection: ECL Basic Kit (RM00020).
Exposure time: 30s.