

A12805

Leader in Biomolecular Solutions for Life Science



## GPC4 Rabbit pAb

Catalog No.: A12805

### Basic Information

#### Observed MW

70kDa

#### Calculated MW

62kDa

#### Category

Mouse Monoclonal Antibody

#### Applications

WB, ELISA

#### Cross-Reactivity

Human, Mouse

### Background

Cell surface heparan sulfate proteoglycans are composed of a membrane-associated protein core substituted with a variable number of heparan sulfate chains. Members of the glypican-related integral membrane proteoglycan family (GRIPS) contain a core protein anchored to the cytoplasmic membrane via a glycosyl phosphatidylinositol linkage. These proteins may play a role in the control of cell division and growth regulation. The GPC4 gene is adjacent to the 3' end of GPC3 and may also play a role in Simpson-Golabi-Behmel syndrome.

### Recommended Dilutions

WB 1:500 - 1:2000

### Immunogen Information

#### Gene ID

2239

#### Swiss Prot

O75487

#### Immunogen

Recombinant fusion protein containing a sequence corresponding to amino acids 357-556 of human GPC4 (NP\_001439.2).

#### Synonyms

KPTS; K-glypican; GPC4

### Contact



[www.abclonal.com](http://www.abclonal.com)

### Product Information

#### Source

Rabbit

#### Isotype

IgG

#### Purification

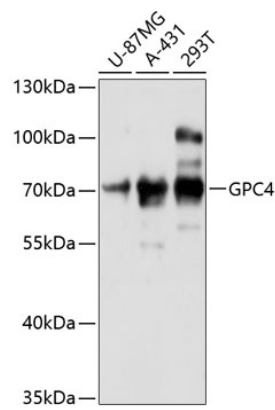
Affinity purification

#### Storage

Store at -20°C. Avoid freeze / thaw cycles.

Buffer: PBS with 0.01% thimerosal, 50% glycerol, pH 7.3.

## Validation Data



Western blot analysis of various lysates using GPC4 Rabbit pAb (A12805) at 1:3000 dilution.  
Secondary antibody: HRP Goat Anti-Rabbit IgG (H+L) (AS014) at 1:10000 dilution.  
Lysates/proteins: 25µg per lane.  
Blocking buffer: 3% nonfat dry milk in TBST.  
Detection: ECL Basic Kit (RM00020).  
Exposure time: 30s.