

A12784

Leader in Biomolecular Solutions for Life Science



RAB7 Rabbit pAb

Catalog No.: A12784

9 Publications

Basic Information

Observed MW

23kDa

Calculated MW

23kDa

Category

Polyclonal Antibody

Applications

WB,IP,ELISA

Cross-Reactivity

Human,Mouse,Rat

Background

RAB family members are small, RAS-related GTP-binding proteins that are important regulators of vesicular transport. Each RAB protein targets multiple proteins that act in exocytic / endocytic pathways. This gene encodes a RAB family member that regulates vesicle traffic in the late endosomes and also from late endosomes to lysosomes. This encoded protein is also involved in the cellular vacuolation of the VacA cytotoxin of *Helicobacter pylori*. Mutations at highly conserved amino acid residues in this gene have caused some forms of Charcot-Marie-Tooth (CMT) type 2 neuropathies.

Recommended Dilutions

WB 1:500 - 1:1000

IP 0.5µg-4µg antibody for
200µg-400µg extracts of
whole cells

Immunogen Information

Gene ID

7879

Swiss Prot

P51149

Immunogen

A synthetic peptide corresponding to a sequence within amino acids 100-207 of human RAB7 (NP_004628.4).

Synonyms

RAB7; CMT2B; PRO2706

Contact



www.abclonal.com

Product Information

Source

Rabbit

Isotype

IgG

Purification

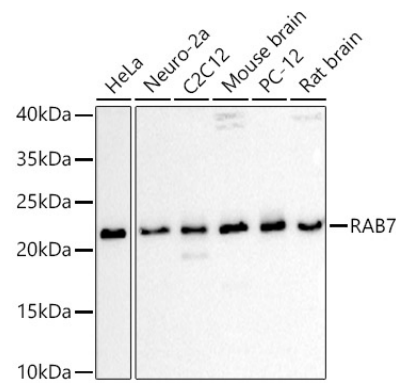
Affinity purification

Storage

Store at -20°C. Avoid freeze / thaw cycles.

Buffer: PBS with 0.05% proclin300,50% glycerol,pH7.3.

Validation Data



Immunoprecipitation analysis of 300ug extracts of HeLa cells using 3ug RAB7 Rabbit pAb (A12784 1:200). Western blot was performed from the immunoprecipitate using RAB7 Rabbit pAb (A12784) at a dilution of 1:1000.

