

A12773

Leader in Biomolecular Solutions for Life Science



EED Rabbit pAb

Catalog No.: A12773

1 Publications

Basic Information

Observed MW

50-75kDa

Calculated MW

50kDa

Category

Polyclonal Antibody

Applications

WB,IF/ICC,ELISA

Cross-Reactivity

Human,Mouse,Rat

Background

This gene encodes a member of the Polycomb-group (PcG) family. PcG family members form multimeric protein complexes, which are involved in maintaining the transcriptional repressive state of genes over successive cell generations. This protein interacts with enhancer of zeste 2, the cytoplasmic tail of integrin beta7, immunodeficiency virus type 1 (HIV-1) MA protein, and histone deacetylase proteins. This protein mediates repression of gene activity through histone deacetylation, and may act as a specific regulator of integrin function. Two transcript variants encoding distinct isoforms have been identified for this gene.

Recommended Dilutions

WB	1:500 - 1:2000
IF/ICC	1:50 - 1:100

Immunogen Information

Gene ID

8726

Swiss Prot

O75530

Immunogen

A synthetic peptide corresponding to a sequence within amino acids 1-100 of human EED (NP_003788.2).

Synonyms

HEED; COGIS; WAIT1; EED

Contact



www.abclonal.com

Product Information

Source

Rabbit

Isotype

IgG

Purification

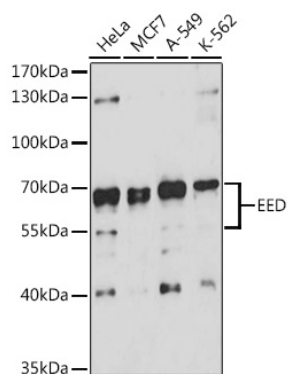
Affinity purification

Storage

Store at -20°C. Avoid freeze / thaw cycles.

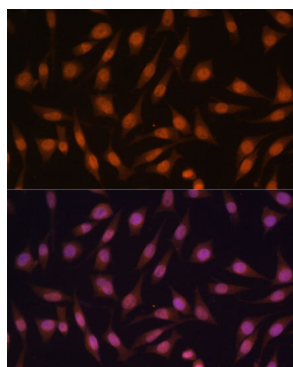
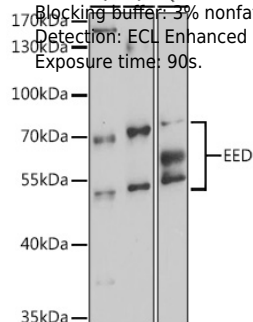
Buffer: PBS with 0.01% thimerosal, 50% glycerol, pH7.3.

Validation Data

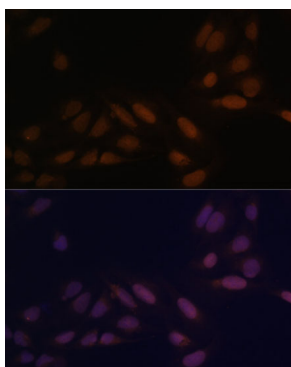


Western blot analysis of various lysates using EED Rabbit pAb (A12773) at 1:3000 dilution.
 Secondary antibody: HRP Goat Anti-Rabbit IgG (H+L) (AS014) at 1:10000 dilution.
 Lysates/proteins: 25µg per lane.
 Blocking buffer: 3% nonfat dry milk in TBST.
 Detection: ECL Basic Kit (RM00020).
 Exposure time: 90s.

Western blot analysis of various lysates using EED Rabbit pAb (A12773) at 1:3000 dilution.
 Secondary antibody: HRP Goat Anti-Rabbit IgG (H+L) (AS014) at 1:10000 dilution.
 Lysates/proteins: 25µg per lane.
 Blocking buffer: 3% nonfat dry milk in TBST.
 Detection: ECL Enhanced Kit (RM00021).
 Exposure time: 90s.



Immunofluorescence analysis of L929 cells using EED Rabbit pAb (A12773) at dilution of 1:100 (40x lens). Secondary antibody: Cy3 Goat Anti-Rabbit IgG (H+L) (AS007) at 1:500 dilution. Blue: DAPI for nuclear staining.



Immunofluorescence analysis of U-2 OS cells using EED Rabbit pAb (A12773) at dilution of 1:100 (40x lens). Secondary antibody: Cy3 Goat Anti-Rabbit IgG (H+L) (AS007) at 1:500 dilution. Blue: DAPI for nuclear staining.