

A12755

Leader in Biomolecular Solutions for Life Science



PARD6A Rabbit pAb

Catalog No.: A12755

Basic Information

Observed MW

37kDa

Calculated MW

37kDa

Category

Polyclonal Antibody

Applications

WB, ELISA

Cross-Reactivity

Rat

Background

This gene is a member of the PAR6 family and encodes a protein with a PSD95/Discs-large/ZO1 (PDZ) domain and a semi-Cdc42/Rac interactive binding (CRIB) domain. This cell membrane protein is involved in asymmetrical cell division and cell polarization processes as a member of a multi-protein complex. The protein also has a role in the epithelial-to-mesenchymal transition (EMT) that characterizes the invasive phenotype associated with metastatic carcinomas. Alternate transcriptional splice variants, encoding different isoforms, have been characterized.

Recommended Dilutions

WB 1:500 - 1:2000

Immunogen Information

Gene ID

50855

Swiss Prot

Q9NPB6

Immunogen

Recombinant fusion protein containing a sequence corresponding to amino acids 256-345 of human PARD6A (NP_001032358.1).

Synonyms

PAR6; PAR6C; TAX40; PAR-6A; TIP-40; PAR6alpha; PARD6A

Contact



www.abclonal.com

Product Information

Source

Rabbit

Isotype

IgG

Purification

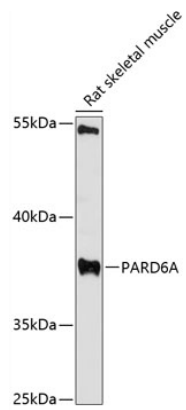
Affinity purification

Storage

Store at -20°C. Avoid freeze / thaw cycles.

Buffer: PBS with 0.01% thimerosal, 50% glycerol, pH 7.3.

Validation Data



Western blot analysis of lysates from rat skeletal muscle, using PARD6A Rabbit pAb (A12755) at 1:3000 dilution.

Secondary antibody: HRP Goat Anti-Rabbit IgG (H+L) (AS014) at 1:10000 dilution.

Lysates/proteins: 25µg per lane.

Blocking buffer: 3% nonfat dry milk in TBST.

Detection: ECL Enhanced Kit (RM00021).

Exposure time: 15s.