

# NIN Rabbit pAb

Catalog No.: A12734

## Basic Information

### Observed MW

243kDa

### Calculated MW

243kDa

### Category

Primary antibody

### Applications

ELISA, WB

### Cross-Reactivity

Human, Mouse, Rat

## Background

This gene encodes one of the proteins important for centrosomal function. This protein is important for positioning and anchoring the microtubules minus-ends in epithelial cells. Localization of this protein to the centrosome requires three leucine zippers in the central coiled-coil domain. Multiple alternatively spliced transcript variants that encode different isoforms have been reported.

## Recommended Dilutions

WB 1:500 - 1:2000

## Immunogen Information

### Gene ID

51199

### Swiss Prot

Q8N4C6

### Immunogen

Recombinant fusion protein containing a sequence corresponding to amino acids 380-665 of human NIN (NP\_891991.1).

### Synonyms

SCKL7; NIN

## Contact

 | [www.abclonal.com](http://www.abclonal.com)

## Product Information

### Source

Rabbit

### Isotype

IgG

### Purification

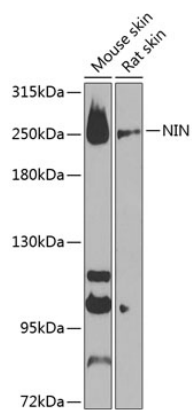
Affinity purification

### Storage

Store at -20°C. Avoid freeze / thaw cycles.

Buffer: PBS with 0.02% sodium azide, 50% glycerol, pH7.3.

# Validation Data



Western blot analysis of various lysates using NIN Rabbit pAb (A12734) at 1:1000 dilution.  
Secondary antibody: HRP Goat Anti-Rabbit IgG (H+L) (AS014) at 1:10000 dilution.  
Lysates/proteins: 25µg per lane.  
Blocking buffer: 3% nonfat dry milk in TBST.  
Detection: ECL Basic Kit (RM00020).  
Exposure time: 90s.