

A12729

Leader in Biomolecular Solutions for Life Science



HLA-DRB5 Rabbit pAb

Catalog No.: A12729

Basic Information

Observed MW

36kDa

Calculated MW

30kDa

Category

Polyclonal Antibody

Applications

WB, ELISA

Cross-Reactivity

Human

Background

HLA-DRB5 belongs to the HLA class II beta chain paralogues. This class II molecule is a heterodimer consisting of an alpha (DRA) and a beta (DRB) chain, both anchored in the membrane. It plays a central role in the immune system by presenting peptides derived from extracellular proteins. Class II molecules are expressed in antigen presenting cells. The beta chain is approximately 26-28 kDa and its gene contains 6 exons. Exon one encodes the leader peptide, exons 2 and 3 encode the two extracellular domains, exon 4 encodes the transmembrane domain and exon 5 encodes the cytoplasmic tail. Within the DR molecule the beta chain contains all the polymorphisms specifying the peptide binding specificities. Typing for these polymorphisms is routinely done for bone marrow and kidney transplantation. There are multiple pseudogenes of this gene.

Recommended Dilutions

WB 1:1000 - 1:2000

Immunogen Information

Gene ID

3127

Swiss Prot

Q30154

Immunogen

Recombinant fusion protein containing a sequence corresponding to amino acids 30-227 of human HLA-DRB5 (NP_002116.2).

Synonyms

DRB5; HLA-DRB5*; HLA-DRB5

Contact



www.abclonal.com

Product Information

Source

Rabbit

Isotype

IgG

Purification

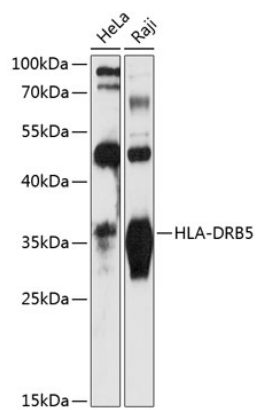
Affinity purification

Storage

Store at -20°C. Avoid freeze / thaw cycles.

Buffer: PBS with 0.01% thimerosal, 50% glycerol, pH7.3.

Validation Data



Western blot analysis of various lysates using HLA-DRB5 Rabbit pAb (A12729) at 1:3000 dilution.
Secondary antibody: HRP Goat Anti-Rabbit IgG (H+L) (A5014) at 1:10000 dilution.
Lysates/proteins: 25µg per lane.
Blocking buffer: 3% nonfat dry milk in TBST.
Detection: ECL Basic Kit (RM00020).
Exposure time: 10s.