

A12716

Leader in Biomolecular Solutions for Life Science



Tafazzin / TAZ Rabbit pAb

Catalog No.: A12716

Basic Information

Observed MW

25-35kDa

Calculated MW

30kDa

Category

Antibody

Applications

WB, ELISA

Cross-Reactivity

Human, Mouse, Rat

Background

This gene encodes a protein that is expressed at high levels in cardiac and skeletal muscle. Mutations in this gene have been associated with a number of clinical disorders including Barth syndrome, dilated cardiomyopathy (DCM), hypertrophic DCM, endocardial fibroelastosis, and left ventricular noncompaction (LVNC). Multiple transcript variants encoding different isoforms have been described. A long form and a short form of each of these isoforms is produced; the short form lacks a hydrophobic leader sequence and may exist as a cytoplasmic protein rather than being membrane-bound. Other alternatively spliced transcripts have been described but the full-length nature of all these transcripts is not known.

Recommended Dilutions

WB 1:1000 - 1:5000

Immunogen Information

Gene ID

6901

Swiss Prot

Q16635

Immunogen

Recombinant Protein corresponding to a sequence within amino acids 174-248 of human Tafazzin / TAZ (NP_851830.1).

Synonyms

EFE; TAZ; BTHS; EFE2; G4.5; Taz1; CMD3A; LVNCX; Tafazzin / TAZ

Contact



www.abclonal.com

Product Information

Source

Rabbit

Isotype

IgG

Purification

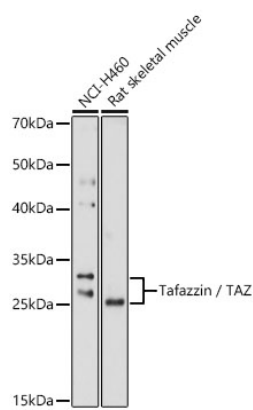
Affinity purification

Storage

Store at -20°C. Avoid freeze / thaw cycles.

Buffer: PBS with 0.01% thimerosal, 50% glycerol, pH 7.3.

Validation Data



Western blot analysis of various lysates using Tafazzin / TAZ Rabbit pAb (A12716) at 1:3000 dilution.
Secondary antibody:HRP Goat Anti-Rabbit IgG (H+L)(AS014) at 1:10000 dilution.
Lysates / proteins: 25 µg per lane.
Blocking buffer: 3 % nonfat dry milk in TBST.
Detection:ECL Basic Kit (RM00020).
Exposure time: 90s.

Western blot analysis of lysates from Mouse heart using Tafazzin / TAZ Rabbit pAb(A12716) at 1:3000 dilution.
Secondary antibody:HRP Goat Anti-Rabbit IgG (H+L)(AS014) at 1:10000 dilution.
Lysates / proteins: 25 µg per lane.
Blocking buffer: 3% nonfat dry milk in TBST.
Detection:ECL Basic Kit (RM00020).
Exposure time:40s.

