

A12710

Leader in Biomolecular Solutions for Life Science



## GUCY1A3 Rabbit pAb

Catalog No.: A12710

### Basic Information

**Observed MW**

77kDa

**Calculated MW**

77kDa

**Category**

Polyclonal Antibody

**Applications**

WB,IF/ICC,ELISA

**Cross-Reactivity**

Human,Mouse,Rat

### Background

Soluble guanylate cyclases are heterodimeric proteins that catalyze the conversion of GTP to 3',5'-cyclic GMP and pyrophosphate. The protein encoded by this gene is an alpha subunit of this complex and it interacts with a beta subunit to form the guanylate cyclase enzyme, which is activated by nitric oxide. Several transcript variants encoding a few different isoforms have been found for this gene.

### Recommended Dilutions

**WB** 1:1000 - 1:3000

**IF/ICC** 1:50 - 1:200

### Immunogen Information

**Gene ID**

2982

**Swiss Prot**

Q02108

**Immunogen**

Recombinant fusion protein containing a sequence corresponding to amino acids 1-120 of human GUCY1A3 (NP\_000847.2).

**Synonyms**

GUCA3; MYMY6; GC-SA3; GUC1A3; GUCA3; GUCY1A3; GCS-alpha-3; GC-S-alpha-1

### Contact



[www.abclonal.com](http://www.abclonal.com)

### Product Information

**Source**

Rabbit

**Isotype**

IgG

**Purification**

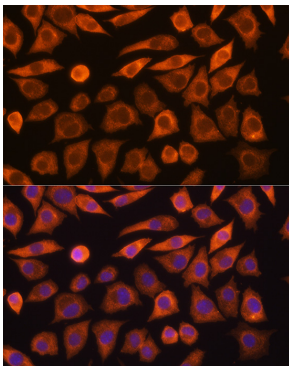
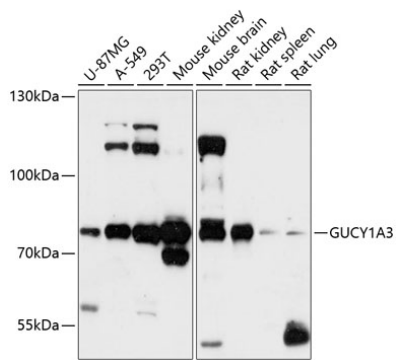
Affinity purification

**Storage**

Store at -20°C. Avoid freeze / thaw cycles.

Buffer: PBS with 0.01% thimerosal, 50% glycerol, pH7.3.

## Validation Data



Immunofluorescence analysis of L929 cells using GUCY1A3 Rabbit pAb (A12710) at dilution of 1:100 (40x lens). Secondary antibody: Cy3 Goat Anti-Rabbit IgG (H+L) (AS007) at 1:500 dilution. Blue: DAPI for nuclear staining.