

A12700

Leader in Biomolecular Solutions for Life Science



## POLR1E Rabbit pAb

Catalog No.: A12700

1 Publications

### Basic Information

#### Observed MW

53kDa

#### Calculated MW

47kDa

#### Category

Polyclonal Antibody

#### Applications

WB,IP,ELISA

#### Cross-Reactivity

Human,Mouse,Rat

### Background

Predicted to enable DNA binding activity; DNA-directed 5'-3' RNA polymerase activity; and RNA polymerase I general transcription initiation factor binding activity. Involved in nucleolar large rRNA transcription by RNA polymerase I. Located in fibrillar center and nucleoplasm.

### Recommended Dilutions

**WB** 1:500 - 1:2000

**IP** 0.5µg-4µg antibody for  
200µg-400µg extracts of  
whole cells

### Immunogen Information

#### Gene ID

64425

#### Swiss Prot

Q9GZS1

#### Immunogen

Recombinant fusion protein containing a sequence corresponding to amino acids 1-419 of human POLR1E (NP\_071935.1).

#### Synonyms

A49; PAF53; PRAF1; RPA49; POLR1E

### Contact



[www.abclonal.com](http://www.abclonal.com)

### Product Information

#### Source

Rabbit

#### Isotype

IgG

#### Purification

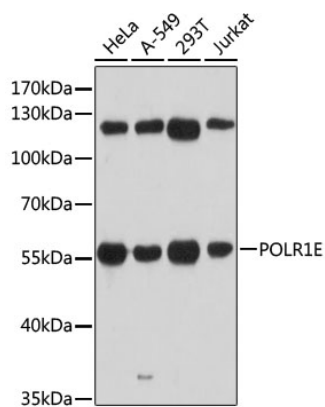
Affinity purification

#### Storage

Store at -20°C. Avoid freeze / thaw cycles.

Buffer: PBS with 0.01% thimerosal, 50% glycerol, pH7.3.

## Validation Data



Western blot analysis of various lysates using POLR1E Rabbit pAb (A12700) at 1:3000 dilution.  
 Secondary antibody: HRP Goat Anti-Rabbit IgG (H+L) (A5014) at 1:10000 dilution.  
 Lysates/proteins: 25µg per lane.  
 Blocking buffer: 3% nonfat dry milk in TBST.  
 Detection: ECL Basic Kit (RM00020).  
 Exposure time: 30s.

Immunoprecipitation analysis of 200 µg extracts of Jurkat cells, using 3 µg POLR1E antibody (A12700).  
 Western blot was performed from the immunoprecipitate using POLR1E antibody (A12700) at a dilution of 1:1000.

