

A12699

Leader in Biomolecular Solutions for Life Science



SCNN1B Rabbit pAb

Catalog No.: A12699

Basic Information

Observed MW

75kDa

Calculated MW

73kDa

Category

Mouse Monoclonal Antibody

Applications

WB, ELISA

Cross-Reactivity

Mouse, Rat

Conjugate

Unconjugated

Background

Nonvoltage-gated, amiloride-sensitive, sodium channels control fluid and electrolyte transport across epithelia in many organs. These channels are heteromeric complexes consisting of 3 subunits: alpha, beta, and gamma. This gene encodes the beta subunit, and mutations in this gene have been associated with pseudohypoaldosteronism type 1 (PHA1), and Liddle syndrome.

Recommended Dilutions

WB 1:1000 - 1:2000

Immunogen Information

Gene ID

6338

Swiss Prot

P51168

Immunogen

Recombinant fusion protein containing a sequence corresponding to amino acids 406-640 of human SCNN1B (NP_000327.2).

Synonyms

BESC1; ENaCb; SCNEB; LIDLS1; PHA1B2; ENaCbeta; beta-ENaC; beta-NaCH; SCNN1B

Contact



www.abclonal.com

Product Information

Source

Rabbit

Isotype

IgG

Purification

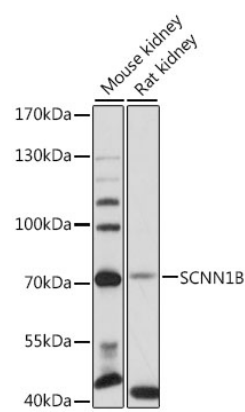
Affinity purification

Storage

Store at -20°C. Avoid freeze / thaw cycles.

Buffer: PBS with 0.01% thimerosal, 50% glycerol, pH 7.3.

Validation Data



Western blot analysis of various lysates using SCNN1B Rabbit pAb (A12699) at 1:3000 dilution.
Secondary antibody: HRP Goat Anti-Rabbit IgG (H+L) (AS014) at 1:10000 dilution.
Lysates/proteins: 25µg per lane.
Blocking buffer: 3% nonfat dry milk in TBST.
Detection: ECL Basic Kit (RM00020).
Exposure time: 10s.