

A12687

Leader in Biomolecular Solutions for Life Science



## [KO Validated] MEK1 Rabbit pAb

Catalog No.: A12687

**KO** Validated

1 Publications

### Basic Information

#### Observed MW

45kDa

#### Calculated MW

43kDa

#### Category

Polyclonal Antibody

#### Applications

WB, IHC-P, ELISA

#### Cross-Reactivity

Human, Mouse, Rat

### Background

The protein encoded by this gene is a member of the dual specificity protein kinase family, which acts as a mitogen-activated protein (MAP) kinase kinase. MAP kinases, also known as extracellular signal-regulated kinases (ERKs), act as an integration point for multiple biochemical signals. This protein kinase lies upstream of MAP kinases and stimulates the enzymatic activity of MAP kinases upon wide variety of extra- and intracellular signals. As an essential component of MAP kinase signal transduction pathway, this kinase is involved in many cellular processes such as proliferation, differentiation, transcription regulation and development.

### Recommended Dilutions

WB 1:1000 - 1:3000

IHC-P 1:50 - 1:200

### Immunogen Information

#### Gene ID

5604

#### Swiss Prot

Q02750

#### Immunogen

A synthetic peptide corresponding to a sequence within amino acids 1-100 of human MEK1 (NP\_002746.1).

#### Synonyms

MEL; CFC3; MEK1; MKK1; MAPKK1; PRKMK1; K1

### Contact



[www.abclonal.com](http://www.abclonal.com)

### Product Information

#### Source

Rabbit

#### Isotype

IgG

#### Purification

Affinity purification

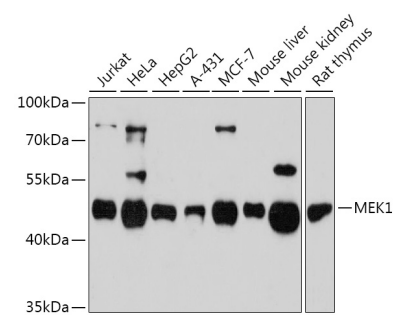
#### Storage

Store at -20°C. Avoid freeze / thaw cycles.

Buffer: PBS with 0.01% thimerosal, 50% glycerol, pH 7.3.

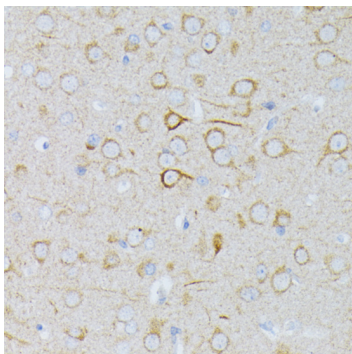
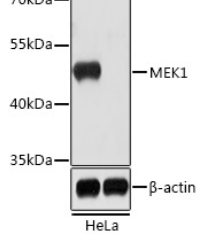


Validation Data

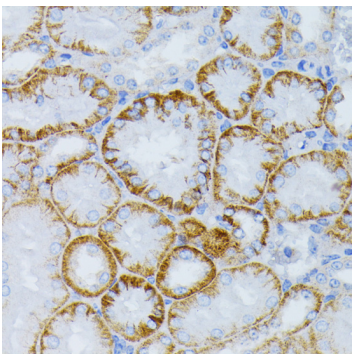


Western blot analysis of various lysates using [KO Validated] MEK1 Rabbit pAb (A12687) at 1:3000 dilution.  
Secondary antibody: HRP Goat Anti-Rabbit IgG (H+L) (AS014) at 1:10000 dilution.  
Lysates/proteins: 25µg per lane.  
Blocking buffer: 3% nonfat dry milk in TBST.  
Detection: ECL Enhanced Kit (RM00021).  
Exposure time: 90s.

Western blot analysis of lysates from wild type (WT) and MEK1 knockout (KO) HeLa cells, using [KO Validated] MEK1 Rabbit pAb (A12687) at 1:1000 dilution.  
Secondary antibody: HRP Goat Anti-Rabbit IgG (H+L) (AS014) at 1:10000 dilution.  
Lysates/proteins: 25µg per lane.  
Blocking buffer: 3% nonfat dry milk in TBST.  
Detection: ECL Basic Kit (RM00020).  
Exposure time: 5s.



Immunohistochemistry analysis of MEK1 in paraffin-embedded Rat brain using [KO Validated] MEK1 Rabbit pAb (A12687) at dilution of 1:100 (40x lens).Perform microwave antigen retrieval with 10 mM PBS buffer pH 7.2 before commencing with IHC staining protocol.



Immunohistochemistry analysis of MEK1 in paraffin-embedded mouse kidney using [KO Validated] MEK1 Rabbit pAb (A12687) at dilution of 1:100 (40x lens).Perform microwave antigen retrieval with 10 mM PBS buffer pH 7.2 before commencing with IHC staining protocol.