

A12675

Leader in Biomolecular Solutions for Life Science



ITM2C Rabbit pAb

Catalog No.: A12675

Basic Information

Observed MW

30kDa

Calculated MW

30kDa

Category

Polyclonal Antibody

Applications

WB, ELISA

Cross-Reactivity

Mouse, Rat

Background

Enables amyloid-beta binding activity. Involved in negative regulation of neuron projection development and neuron differentiation. Located in several cellular components, including Golgi apparatus; lysosome; and perinuclear region of cytoplasm.

Recommended Dilutions

WB 1:500 - 1:2000

Immunogen Information

Gene ID

81618

Swiss Prot

Q9NQX7

Immunogen

Recombinant fusion protein containing a sequence corresponding to amino acids 1-220 of human ITM2C (NP_001012532.1).

Synonyms

E25; BRI3; E25C; ITM3; BRICD2C; ITM2C

Contact



www.abclonal.com

Product Information

Source

Rabbit

Isotype

IgG

Purification

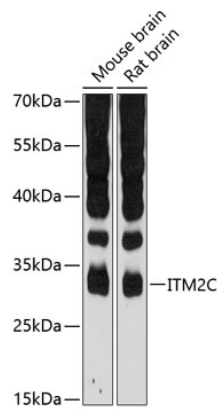
Affinity purification

Storage

Store at -20°C. Avoid freeze / thaw cycles.

Buffer: PBS with 0.01% thimerosal, 50% glycerol, pH 7.3.

Validation Data



Western blot analysis of extracts of various cell lines, using ITM2C antibody (A12675) at 1:3000 dilution.
Secondary antibody: HRP Goat Anti-Rabbit IgG (H+L) (A5014) at 1:10000 dilution.
Lysates/proteins: 25µg per lane.
Blocking buffer: 3% nonfat dry milk in TBST.
Detection: ECL Basic Kit (RM00020).
Exposure time: 90s.