

A12647

Leader in Biomolecular Solutions for Life Science



S100A2 Rabbit pAb

Catalog No.: A12647

3 Publications

Basic Information

Observed MW

11-15kDa

Calculated MW

11kDa

Category

Mouse Monoclonal Antibody

Applications

WB, ELISA

Cross-Reactivity

Human, Mouse

Background

The protein encoded by this gene is a member of the S100 family of proteins containing 2 EF-hand calcium-binding motifs. S100 proteins are localized in the cytoplasm and/or nucleus of a wide range of cells, and involved in the regulation of a number of cellular processes such as cell cycle progression and differentiation. S100 genes include at least 13 members which are located as a cluster on chromosome 1q21. This protein may have a tumor suppressor function. Chromosomal rearrangements and altered expression of this gene have been implicated in breast cancer.

Recommended Dilutions

WB 1:1000 - 1:2000

Immunogen Information

Gene ID

6273

Swiss Prot

P29034

Immunogen

Recombinant fusion protein containing a sequence corresponding to amino acids 1-97 of human S100A2 (NP_005969.1).

Synonyms

CAN19; S100L; S100A2

Contact



www.abclonal.com

Product Information

Source

Rabbit

Isotype

IgG

Purification

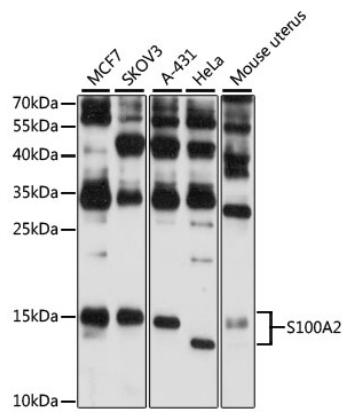
Affinity purification

Storage

Store at -20°C. Avoid freeze / thaw cycles.

Buffer: PBS with 0.01% thimerosal, 50% glycerol, pH 7.3.

Validation Data



Western blot analysis of various lysates using S100A2 Rabbit pAb (A12647) at 1:3000 dilution.
Secondary antibody: HRP Goat Anti-Rabbit IgG (H+L) (AS014) at 1:10000 dilution.
Lysates/proteins: 25µg per lane.
Blocking buffer: 3% nonfat dry milk in TBST.
Detection: ECL Basic Kit (RM00020).
Exposure time: 60s.