

A12642

Leader in Biomolecular Solutions for Life Science



## NUCB2 Rabbit pAb

Catalog No.: A12642

### Basic Information

**Observed MW**

50kDa

**Calculated MW**

50kDa

**Category**

Mouse Monoclonal Antibody

**Applications**

WB, ELISA

**Cross-Reactivity**

Human, Mouse

### Background

This gene encodes a protein with a suggested role in calcium level maintenance, eating regulation in the hypothalamus, and release of tumor necrosis factor from vascular endothelial cells. This protein binds calcium and has EF-folding domains.

### Recommended Dilutions

WB 1:500 - 1:2000

### Immunogen Information

**Gene ID**

4925

**Swiss Prot**

P80303

**Immunogen**

Recombinant fusion protein containing a sequence corresponding to amino acids 321-420 of human NUCB2 (NP\_005004.1).

**Synonyms**

NEFA; HEL-S-109; NUCB2

### Contact



[www.abclonal.com](http://www.abclonal.com)

### Product Information

**Source**

Rabbit

**Isotype**

IgG

**Purification**

Affinity purification

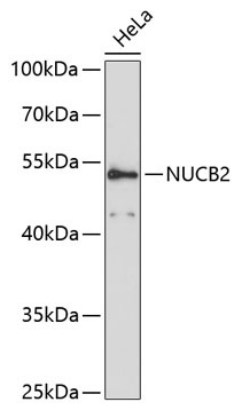
**Storage**

Store at -20°C. Avoid freeze / thaw cycles.

Buffer: PBS with 0.01% thimerosal, 50% glycerol, pH 7.3.

## Validation Data

---



Western blot analysis of lysates from HeLa cells, using NUCB2 Rabbit pAb (A12642) at 1:3000 dilution.  
Secondary antibody: HRP Goat Anti-Rabbit IgG (H+L) (A5014) at 1:10000 dilution.  
Lysates/proteins: 25µg per lane.  
Blocking buffer: 3% nonfat dry milk in TBST.  
Detection: ECL Basic Kit (RM00020).  
Exposure time: 90s.