

A12639

Leader in Biomolecular Solutions for Life Science



## CXCL2 Rabbit pAb

Catalog No.: A12639

1 Publications

### Basic Information

#### Observed MW

11kDa

#### Calculated MW

11kDa

#### Category

Polyclonal Antibody

#### Applications

WB, ELISA

#### Cross-Reactivity

Rat

### Background

This antimicrobial gene is part of a chemokine superfamily that encodes secreted proteins involved in immunoregulatory and inflammatory processes. The superfamily is divided into four subfamilies based on the arrangement of the N-terminal cysteine residues of the mature peptide. This chemokine, a member of the CXC subfamily, is expressed at sites of inflammation and may suppress hematopoietic progenitor cell proliferation.

### Recommended Dilutions

WB 1:500 - 1:2000

### Immunogen Information

#### Gene ID

2920

#### Swiss Prot

P19875

#### Immunogen

Recombinant fusion protein containing a sequence corresponding to amino acids 1-107 of human CXCL2 (NP\_002080.1).

#### Synonyms

GRO2; GROb; MIP2; MIP2A; SCYB2; MGSA-b; MIP-2a; CINC-2a; CXCL2

### Contact



[www.abclonal.com](http://www.abclonal.com)

### Product Information

#### Source

Rabbit

#### Isotype

IgG

#### Purification

Affinity purification

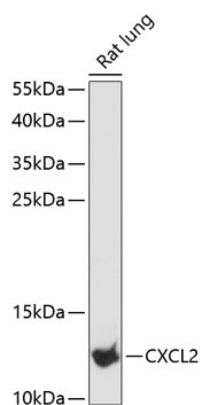
#### Storage

Store at -20°C. Avoid freeze / thaw cycles.

Buffer: PBS with 0.01% thimerosal, 50% glycerol, pH 7.3.

## Validation Data

---



Western blot analysis of lysates from rat lung, using CXCL2 Rabbit pAb (A12639) at 1:3000 dilution.  
Secondary antibody: HRP Goat Anti-Rabbit IgG (H+L) (A5014) at 1:10000 dilution.  
Lysates/proteins: 25µg per lane.  
Blocking buffer: 3% nonfat dry milk in TBST.  
Detection: ECL Basic Kit (RM00020).  
Exposure time: 90s.