

A12633

Leader in Biomolecular Solutions for Life Science



CTNND2 Rabbit pAb

Catalog No.: A12633

Basic Information

Observed MW

129kDa

Calculated MW

133kDa

Category

Polyclonal Antibody

Applications

WB, ELISA

Cross-Reactivity

Human, Rat

Background

This gene encodes an adhesive junction associated protein of the armadillo/beta-catenin superfamily and is implicated in brain and eye development and cancer formation. The protein encoded by this gene promotes the disruption of E-cadherin based adherens junction to favor cell spreading upon stimulation by hepatocyte growth factor. This gene is overexpressed in prostate adenocarcinomas and is associated with decreased expression of tumor suppressor E-cadherin in this tissue. This gene resides in a region of the short arm of chromosome 5 that is deleted in Cri du Chat syndrome. Alternative splicing results in multiple transcript variants encoding different isoforms.

Recommended Dilutions

WB 1:1000 - 1:3000

Immunogen Information

Gene ID

1501

Swiss Prot

Q9UQB3

Immunogen

Recombinant fusion protein containing a sequence corresponding to amino acids 966-1225 of human CTNND2 (NP_001323.1).

Synonyms

GT24; NPRAP; CTNND2

Contact



www.abclonal.com

Product Information

Source

Rabbit

Isotype

IgG

Purification

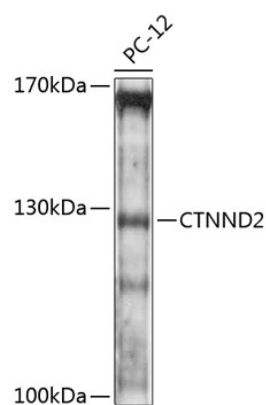
Affinity purification

Storage

Store at -20°C. Avoid freeze / thaw cycles.

Buffer: PBS with 0.01% thimerosal, 50% glycerol, pH7.3.

Validation Data



Western blot analysis of lysates from PC-12 cells, using CTNND2 Rabbit pAb (A12633) at 1:3000 dilution.
Secondary antibody: HRP Goat Anti-Rabbit IgG (H+L) (AS014) at 1:10000 dilution.
Lysates/proteins: 25µg per lane.
Blocking buffer: 3% nonfat dry milk in TBST.
Detection: ECL Basic Kit (RM00020).
Exposure time: 10s.