

A12631

Leader in Biomolecular Solutions for Life Science



## Creatine kinase B type (CKB) Rabbit pAb

Catalog No.: A12631

2 Publications

### Basic Information

#### Observed MW

43kDa

#### Calculated MW

43kDa

#### Category

Polyclonal Antibody

#### Applications

WB, ELISA

#### Cross-Reactivity

Human, Mouse, Rat

### Background

The protein encoded by this gene is a cytoplasmic enzyme involved in energy homeostasis. The encoded protein reversibly catalyzes the transfer of phosphate between ATP and various phosphogens such as creatine phosphate. It acts as a homodimer in brain as well as in other tissues, and as a heterodimer with a similar muscle isozyme in heart. The encoded protein is a member of the ATP:guanido phosphotransferase protein family. A pseudogene of this gene has been characterized.

### Recommended Dilutions

WB 1:1000 - 1:2000

### Immunogen Information

#### Gene ID

1152

#### Swiss Prot

P12277

#### Immunogen

Recombinant fusion protein containing a sequence corresponding to amino acids 182-381 of human Creatine kinase B type (Creatine kinase B type (CKB)) (NP\_001814.2).

#### Synonyms

BCK; B-CK; CKBB; CPK-B; HEL-211; HEL-S-29; Creatine kinase B type (CKB)

### Contact



[www.abclonal.com](http://www.abclonal.com)

### Product Information

#### Source

Rabbit

#### Isotype

IgG

#### Purification

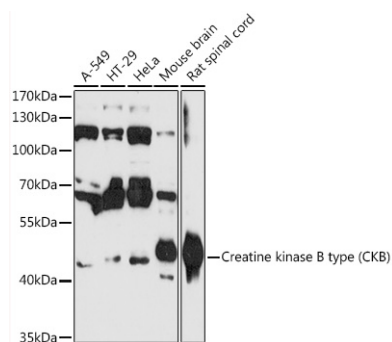
Affinity purification

#### Storage

Store at -20°C. Avoid freeze / thaw cycles.

Buffer: PBS with 0.01% thimerosal, 50% glycerol, pH7.3.

## Validation Data



Western blot analysis of various lysates using Creatine kinase B type (CKB) Rabbit pAb (A12631) at 1:3000 dilution.

Secondary antibody: HRP Goat Anti-Rabbit IgG (H+L) (AS014) at 1:10000 dilution.

Lysates/proteins: 25µg per lane.

Blocking buffer: 3% nonfat dry milk in TBST.

Detection: ECL Basic Kit (RM00020).

Exposure time: 60s.