

A12578

Leader in Biomolecular Solutions for Life Science



## Ambra1 Rabbit pAb

Catalog No.: A12578

2 Publications

### Basic Information

#### Observed MW

175kDa

#### Calculated MW

143kDa

#### Category

Polyclonal Antibody

#### Applications

WB, ELISA

#### Cross-Reactivity

Mouse

### Background

Enables GTPase binding activity and ubiquitin protein ligase binding activity. Involved in macroautophagy; positive regulation of phosphatidylinositol 3-kinase activity; and response to mitochondrial depolarisation. Located in cytosol. Colocalizes with mitochondrion. Biomarker of multiple system atrophy.

### Recommended Dilutions

WB 1:500 - 1:2000

### Immunogen Information

#### Gene ID

55626

#### Swiss Prot

Q9C0C7

#### Immunogen

Recombinant fusion protein containing a sequence corresponding to amino acids 961-1208 of human Ambra1 (NP\_060219.2).

#### Synonyms

DCAF3; WDR94; Ambra1

### Contact



[www.abclonal.com](http://www.abclonal.com)

### Product Information

#### Source

Rabbit

#### Isotype

IgG

#### Purification

Affinity purification

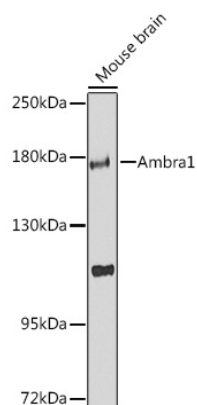
#### Storage

Store at -20°C. Avoid freeze / thaw cycles.

Buffer: PBS with 0.02% sodium azide, 50% glycerol, pH 7.3.

## Validation Data

---



Western blot analysis of extracts of mouse brain, using Ambra1 Antibody (A12578) at 1:1000 dilution. Secondary antibody: HRP Goat Anti-Rabbit IgG (H+L) (AS014) at 1:10000 dilution. Lysates/proteins: 25µg per lane. Blocking buffer: 3% nonfat dry milk in TBST. Detection: ECL Enhanced Kit (RM00021). Exposure time: 90s.