

## SIRT2 Polyclonal Antibody

<b>Catalog No.</b>	A12575	<b>Category</b>	Polyclonal Antibodies
<b>Applications</b>	WB, IHC, IF	<b>Observed MW</b>	38-43kDa
<b>Cross-reactivity</b>	Human, Mouse, Rat	<b>Calculated MW</b>	30kDa/35kDa/39kDa/41kDa/43kDa

### Immunogen Information

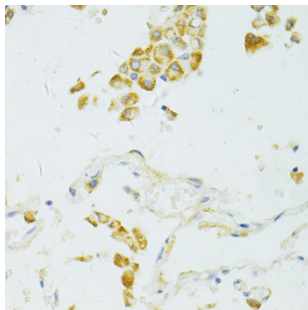
<b>Immunogen</b>	A synthetic peptide of human SIRT2
<b>Gene ID</b>	22933
<b>Swiss prot</b>	Q8IXJ6
<b>Synonyms</b>	SIRT2; SIR2; SIR2L; SIR2L2; sirtuin 2

### Product information

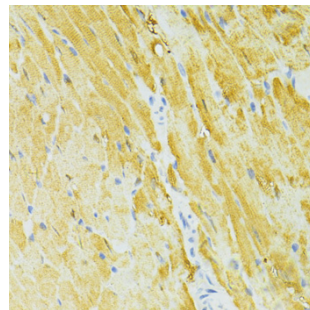
<b>Source</b>	Rabbit
<b>Isotype</b>	IgG
<b>Purification method</b>	Affinity purification
<b>Storage</b>	Store at -20°C. Avoid freeze / thaw cycles. Buffer: PBS with 0.02% sodium azide, 50% glycerol, pH 7.3.

### Background

This gene encodes a member of the sirtuin family of proteins, homologs to the yeast Sir2 protein. Members of the sirtuin family are characterized by a sirtuin core domain and grouped into four classes. The functions of human sirtuins have not yet been determined; however, yeast sirtuin proteins are known to regulate epigenetic gene silencing and suppress recombination of rDNA. Studies suggest that the human sirtuins may function as intracellular regulatory proteins with mono-ADP-ribosyltransferase activity. The protein encoded by this gene is included in class I of the sirtuin family. Several transcript variants are resulted from alternative splicing of this gene.



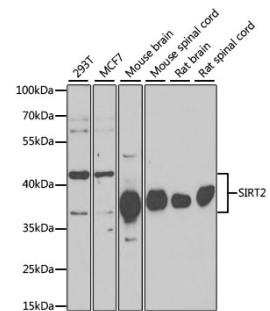
Immunohistochemistry of paraffin-embedded human lung cancer using SIRT2 antibody (A12575) at dilution of 1:100 (40x lens).



Immunohistochemistry of paraffin-embedded mouse heart using SIRT2 antibody (A12575) at dilution of 1:100 (40x lens).

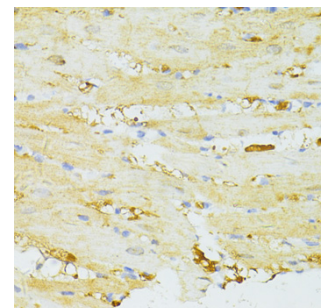
### Recommended Dilutions

WB	1:500 - 1:2000
IHC	1:50 - 1:200
IF	1:50 - 1:200

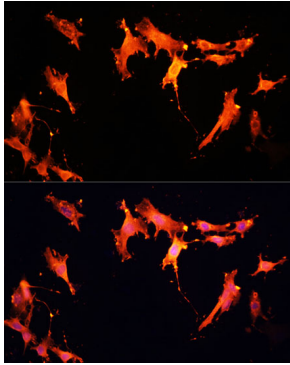


Western blot analysis of extracts of various cell lines, using SIRT2 antibody (A12575) at 1:1000 dilution.

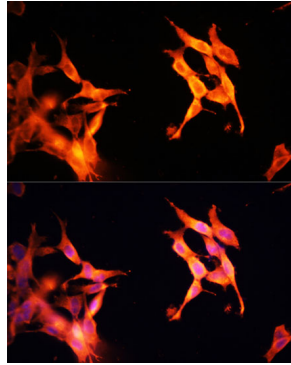
Secondary antibody: HRP Goat Anti-Rabbit IgG (H+L) (AS014) at 1:10000 dilution.  
 Lysates/proteins: 25ug per lane.  
 Blocking buffer: 3% nonfat dry milk in TBST.  
 Detection: ECL Enhanced Kit (RM00021).  
 Exposure time: 90s.



Immunohistochemistry of paraffin-embedded rat heart using SIRT2 antibody (A12575) at dilution of 1:100 (40x lens).



Immunofluorescence analysis of C6 cells using SIRT2 Polyclonal Antibody (A12575) at dilution of 1:100 (40x lens).  
Blue: DAPI for nuclear staining.



Immunofluorescence analysis of NIH-3T3 cells using SIRT2 Polyclonal Antibody (A12575) at dilution of 1:100 (40x lens).  
Blue: DAPI for nuclear staining.