

A12565

Leader in Biomolecular Solutions for Life Science



## KLK11 Rabbit pAb

Catalog No.: A12565

### Basic Information

#### Observed MW

40kDa

#### Calculated MW

31kDa

#### Category

Polyclonal Antibody

#### Applications

WB, IHC-P, ELISA

#### Cross-Reactivity

Human, Mouse, Rat

### Background

Kallikreins are a subgroup of serine proteases having diverse physiological functions. Growing evidence suggests that many kallikreins are implicated in carcinogenesis and some have potential as novel cancer and other disease biomarkers. This gene is one of the fifteen kallikrein subfamily members located in a cluster on chromosome 19. Alternate splicing and the use of alternate promoters results in multiple transcript variants encoding distinct isoforms which are differentially expressed.

### Recommended Dilutions

WB	1:500 - 1:1000
IHC-P	1:50 - 1:100

### Immunogen Information

#### Gene ID

11012

#### Swiss Prot

Q9UBX7

#### Immunogen

Recombinant fusion protein containing a sequence corresponding to amino acids 1-250 of human KLK11 (NP\_001129504.1).

#### Synonyms

TLSP; PRSS20; KLK11

### Contact



[www.abclonal.com](http://www.abclonal.com)

### Product Information

#### Source

Rabbit

#### Isotype

IgG

#### Purification

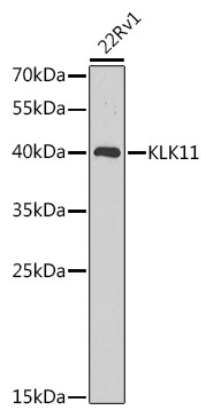
Affinity purification

#### Storage

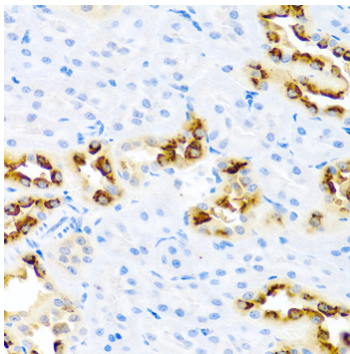
Store at -20°C. Avoid freeze / thaw cycles.

Buffer: PBS with 0.02% sodium azide, 50% glycerol, pH 7.3.

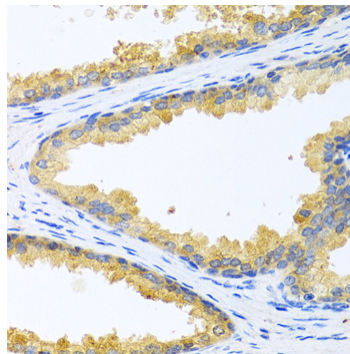
## Validation Data



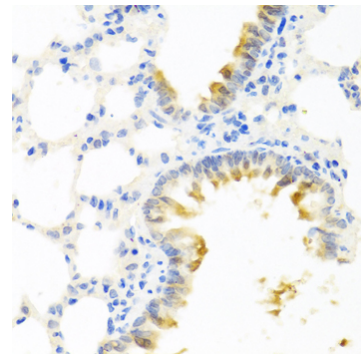
Western blot analysis of extracts of 22Rv1 cells, using KLK11 antibody (A12565) at 1:1000 dilution.  
Secondary antibody: HRP Goat Anti-Rabbit IgG (H+L) (AS014) at 1:10000 dilution.  
Lysates/proteins: 25µg per lane.  
Blocking buffer: 3% nonfat dry milk in TBST.  
Detection: ECL Enhanced Kit (RM00021).  
Exposure time: 20s.



Immunohistochemistry analysis of paraffin-embedded rat kidney using KLK11 antibody (A12565) at dilution of 1:100 (40x lens). Perform microwave antigen retrieval with 10 mM PBS buffer pH 7.2 before commencing with IHC staining protocol.



Immunohistochemistry analysis of paraffin-embedded human prostate using KLK11 antibody (A12565) at dilution of 1:100 (40x lens). Perform microwave antigen retrieval with 10 mM PBS buffer pH 7.2 before commencing with IHC staining protocol.



Immunohistochemistry analysis of paraffin-embedded mouse lung using KLK11 antibody (A12565) at dilution of 1:100 (40x lens). Perform microwave antigen retrieval with 10 mM PBS buffer pH 7.2 before commencing with IHC staining protocol.