

SELP Rabbit pAb

Catalog No.	A12512	Category	Polyclonal Antibodies
Applications	WB	Observed MW	100kDa
Cross-reactivity	Mouse, Rat	Calculated MW	90kDa

Immunogen Information

Immunogen	Recombinant fusion protein containing a sequence corresponding to amino acids 220-319 of human SELP (NP_002996.2).
Gene ID	6403
Swiss prot	P16109
Synonyms	SELP;CD62;CD62P;GMP140;GRMP;LECAM3;PADGEM;PSEL

Product information

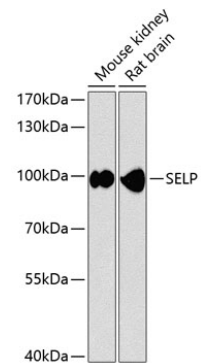
Source	Rabbit
Isotype	IgG
Purification method	Affinity purification
Storage	Store at -20°C. Avoid freeze / thaw cycles. Buffer: PBS with 0.02% sodium azide, 50% glycerol, pH7.3.

Background

This gene encodes a 140 kDa protein that is stored in the alpha-granules of platelets and Weibel-Palade bodies of endothelial cells. This protein redistributes to the plasma membrane during platelet activation and degranulation and mediates the interaction of activated endothelial cells or platelets with leukocytes. The membrane protein is a calcium-dependent receptor that binds to sialylated forms of Lewis blood group carbohydrate antigens on neutrophils and monocytes. Alternative splice variants may occur but are not well documented.

Recommended Dilutions

WB 1:500 - 1:2000



Western blot analysis of extracts of various cell lines, using SELP antibody (A12512) at 1:1000 dilution. Secondary antibody: HRP Goat Anti-Rabbit IgG (H+L) (AS014) at 1:10000 dilution. Lysates/proteins: 25ug per lane. Blocking buffer: 3% nonfat dry milk in TBST. Detection: ECL Enhanced Kit (RM00021). Exposure time: 5s.