

A12498

Leader in Biomolecular Solutions for Life Science



CLIP1 Rabbit pAb

Catalog No.: A12498

Basic Information

Observed MW

182kDa

Calculated MW

162kDa

Category

Polyclonal Antibody

Applications

WB, ELISA

Cross-Reactivity

Human, Mouse, Rat

Background

The protein encoded by this gene links endocytic vesicles to microtubules. This gene is highly expressed in Reed-Sternberg cells of Hodgkin disease. Several transcript variants encoding different isoforms have been found for this gene.

Recommended Dilutions

WB 1:500 - 1:2000

Immunogen Information

Gene ID

6249

Swiss Prot

P30622

Immunogen

Recombinant fusion protein containing a sequence corresponding to amino acids 1228-1427 of human CLIP1 (NP_002947.1).

Synonyms

RSN; CLIP; CYLN1; CLIP170; CLIP-170; CLIP1

Contact



www.abclonal.com

Product Information

Source

Rabbit

Isotype

IgG

Purification

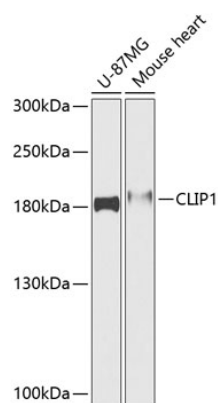
Affinity purification

Storage

Store at -20°C. Avoid freeze / thaw cycles.

Buffer: PBS with 0.02% sodium azide, 50% glycerol, pH 7.3.

Validation Data



Western blot analysis of extracts of various cell lines, using CLIP1 antibody (A12498) at 1:1000 dilution.
Secondary antibody: HRP Goat Anti-Rabbit IgG (H+L) (AS014) at 1:10000 dilution.
Lysates/proteins: 25µg per lane.
Blocking buffer: 3% nonfat dry milk in TBST.
Detection: ECL Basic Kit (RM00020).
Exposure time: 60s.