

[KO Validated] SHP2 Rabbit pAb

Catalog No.: A12486 **KO** Validated

Basic Information

Observed MW

75kDa

Calculated MW

68kDa

Category

Primary antibody

Applications

ELISA, WB, IF/ICC, IP

Cross-Reactivity

Human, Mouse, Rat

Background

The protein encoded by this gene is a member of the protein tyrosine phosphatase (PTP) family. PTPs are known to be signaling molecules that regulate a variety of cellular processes including cell growth, differentiation, mitotic cycle, and oncogenic transformation. This PTP contains two tandem Src homology-2 domains, which function as phospho-tyrosine binding domains and mediate the interaction of this PTP with its substrates. This PTP is widely expressed in most tissues and plays a regulatory role in various cell signaling events that are important for a diversity of cell functions, such as mitogenic activation, metabolic control, transcription regulation, and cell migration. Mutations in this gene are a cause of Noonan syndrome as well as acute myeloid leukemia.

Recommended Dilutions

WB 1:500 - 1:2000**IF/ICC** 1:50 - 1:200**IP** 0.5µg-4µg antibody for
200µg-400µg extracts of
whole cells

Immunogen Information

Gene ID

5781

Swiss Prot

Q06124

Immunogen

Recombinant fusion protein containing a sequence corresponding to amino acids 1-460 of human SHP2 (NP_002825.3).

Synonyms

CFC; NS1; JMML; SHP2; BPTP3; PTP2C; METCDS; PTP-1D; SH-PTP2; SH-PTP3; P2

Contact

 | www.abclonal.com

Product Information

Source

Rabbit

Isotype

IgG

Purification

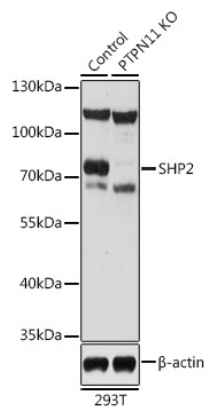
Affinity purification

Storage

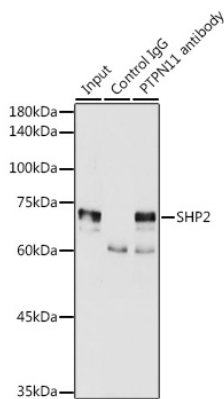
Store at -20°C. Avoid freeze / thaw cycles.

Buffer: PBS with 0.01% thimerosal, 50% glycerol, pH7.3.

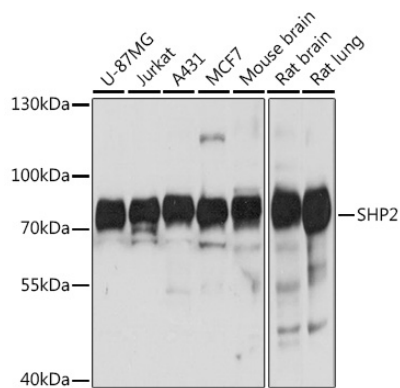
Validation Data



Western blot analysis of lysates from wild type (WT) and SHP2 knockout (KO) 293T cells, using [KO Validated] SHP2 Rabbit pAb (A12486) at 1:1000 dilution.
Secondary antibody: HRP Goat Anti-Rabbit IgG (H+L) (AS014) at 1:10000 dilution.
Lysates/proteins: 25 μ g per lane.
Blocking buffer: 3% nonfat dry milk in TBST.
Detection: ECL Basic Kit (RM00020).
Exposure time: 30s.

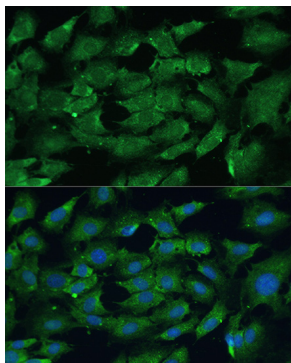


Immunoprecipitation analysis of 300 μ g extracts of MCF7 cells using 3 μ g SHP2 antibody (A12486).
Western blot was performed from the immunoprecipitate using SHP2 antibody (A12486) at a dilution of 1:2000.



Western blot analysis of various lysates using [KO Validated] SHP2 Rabbit pAb (A12486) at 1:1000 dilution.
Secondary antibody: HRP Goat Anti-Rabbit IgG (H+L) (AS014) at 1:10000 dilution.
Lysates/proteins: 25 μ g per lane.
Blocking buffer: 3% nonfat dry milk in TBST.
Detection: ECL Basic Kit (RM00020).
Exposure time: 3s.

Validation Data



Immunofluorescence analysis of C6 cells using [KO Validated] SHP2 Rabbit pAb (A12486) at dilution of 1:100. Blue: DAPI for nuclear staining.