

## [KO Validated] EIF4EBP1 Polyclonal Antibody

|                         |                   |                      |                       |
|-------------------------|-------------------|----------------------|-----------------------|
| <b>Catalog No.</b>      | A1248             | <b>Category</b>      | Polyclonal Antibodies |
| <b>Applications</b>     | WB, IF            | <b>Observed MW</b>   | 17kDa                 |
| <b>Cross-reactivity</b> | Human, Mouse, Rat | <b>Calculated MW</b> | 12kDa                 |

### Immunogen Information

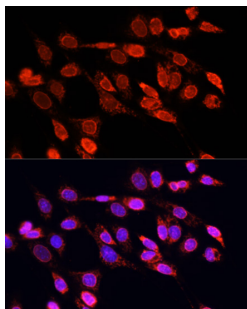
|                   |  |
|-------------------|--|
| <b>Immunogen</b>  | A synthetic peptide corresponding to a sequence within amino acids 50 to the C-terminus of human EIF4EBP1 (NP_004086.1). |
| <b>Gene ID</b>    | 1978   |
| <b>Swiss prot</b> | Q13541   |
| <b>Synonyms</b>   | EIF4EBP1; 4E-BP1; 4EBP1; BP-1; PHAS-I; eukaryotic translation initiation factor 4E-binding protein 1                     |

### Product information

|                            |  |
|----------------------------|--|
| <b>Source</b>              | Rabbit   |
| <b>Isotype</b>             | IgG  |
| <b>Purification method</b> | Affinity purification  |
| <b>Storage</b>             | Store at -20°C. Avoid freeze / thaw cycles.<br>Buffer: PBS with 0.02% sodium azide, 50% glycerol, pH7.3. |

### Background

This gene encodes one member of a family of translation repressor proteins. The protein directly interacts with eukaryotic translation initiation factor 4E (eIF4E), which is a limiting component of the multisubunit complex that recruits 40S ribosomal subunits to the 5' end of mRNAs. Interaction of this protein with eIF4E inhibits complex assembly and represses translation. This protein is phosphorylated in response to various signals including UV irradiation and insulin signaling, resulting in its dissociation from eIF4E and activation of mRNA translation.

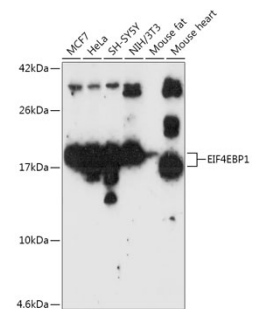


Immunofluorescence - [KO Validated]  
EIF4EBP1 Polyclonal Antibody (A1248)

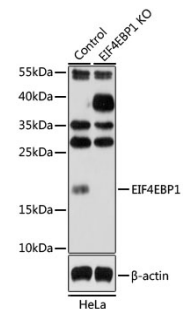
### Recommended Dilutions

WB 1:500 -  
1:1000

IF 1:50 -  
1:200



Western blot - [KO Validated] EIF4EBP1 Polyclonal Antibody (A1248)



Western blot - [KO Validated] EIF4EBP1 Polyclonal Antibody (A1248)