

A12456

Leader in Biomolecular Solutions for Life Science



KTN1 Rabbit pAb

Catalog No.: A12456

1 Publications

Basic Information

Observed MW

178kDa

Calculated MW

156kDa

Category

Polyclonal Antibody

Applications

WB, ELISA

Cross-Reactivity

Human, Mouse, Rat

Background

This gene encodes an integral membrane protein that is a member of the kinectin protein family. The encoded protein is primarily localized to the endoplasmic reticulum membrane. This protein binds kinesin and may be involved in intracellular organelle motility. This protein also binds translation elongation factor-delta and may be involved in the assembly of the elongation factor-1 complex. Alternate splicing results in multiple transcript variants of this gene.

Recommended Dilutions

WB 1:500 - 1:2000

Immunogen Information

Gene ID

3895

Swiss Prot

Q86UP2

Immunogen

A synthetic peptide corresponding to a sequence within amino acids 1-100 of human KTN1 (NP_001072989.1).

Synonyms

CG1; KNT; MU-RMS-40.19; KTN1

Contact



www.abclonal.com

Product Information

Source

Rabbit

Isotype

IgG

Purification

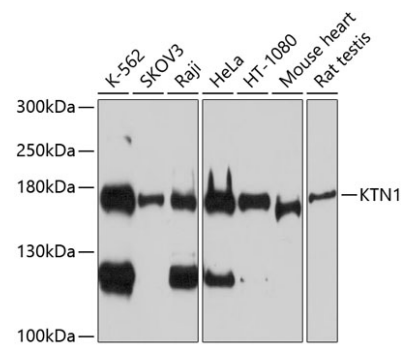
Affinity purification

Storage

Store at -20°C. Avoid freeze / thaw cycles.

Buffer: PBS with 0.02% sodium azide, 50% glycerol, pH 7.3.

Validation Data



Western blot analysis of extracts of various cell lines, using KTN1 antibody (A12456) at 1:1000 dilution.
Secondary antibody: HRP Goat Anti-Rabbit IgG (H+L) (A5014) at 1:10000 dilution.
Lysates/proteins: 25µg per lane.
Blocking buffer: 3% nonfat dry milk in TBST.
Detection: ECL Basic Kit (RM00020).
Exposure time: 90s.