

A12450

Leader in Biomolecular Solutions for Life Science



## IFN gamma Rabbit pAb

Catalog No.: A12450

20 Publications

### Basic Information

#### Observed MW

17kDa

#### Calculated MW

19kDa

#### Category

Polyclonal Antibody

#### Applications

WB, IHC-P, ELISA

#### Cross-Reactivity

Human, Mouse, Rat

### Background

This gene encodes a soluble cytokine that is a member of the type II interferon class. The encoded protein is secreted by cells of both the innate and adaptive immune systems. The active protein is a homodimer that binds to the interferon gamma receptor which triggers a cellular response to viral and microbial infections. Mutations in this gene are associated with an increased susceptibility to viral, bacterial and parasitic infections and to several autoimmune diseases.

### Recommended Dilutions

WB 1:2000 - 1:10000

IHC-P 1:50 - 1:200

### Immunogen Information

#### Gene ID

3458

#### Swiss Prot

P01579

#### Immunogen

Recombinant fusion protein containing a sequence corresponding to amino acids 24-161 of IFN gamma (NP\_997468.1).

#### Synonyms

IFG; IFI; IMD69; IFN gamma

### Contact



[www.abclonal.com](http://www.abclonal.com)

### Product Information

#### Source

Rabbit

#### Isotype

IgG

#### Purification

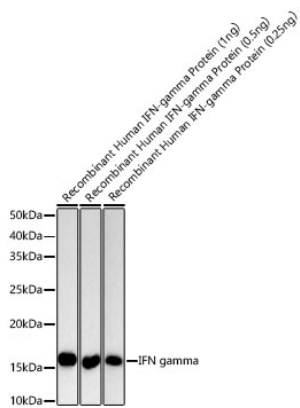
Affinity purification

#### Storage

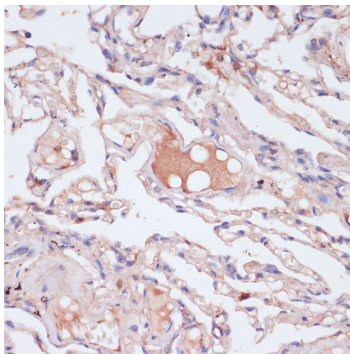
Store at -20°C. Avoid freeze / thaw cycles.

Buffer: PBS with 0.01% thimerosal, 50% glycerol, pH 7.3.

## Validation Data



Western blot analysis of recombinant Human IFN-gamma Protein, using IFN gamma Rabbit pAb (A12450) at 1:9000 dilution.  
Secondary antibody: HRP Goat Anti-Rabbit IgG (H+L) (AS014) at 1:10000 dilution.  
Lysates/proteins: 1ng/0.5ng/0.25ng per lane.  
Blocking buffer: 3% nonfat dry milk in TBST.  
Detection: ECL Basic Kit (RM00020).  
Exposure time: 180s.



Immunohistochemistry analysis of IFN gamma in paraffin-embedded human lung using IFN gamma Rabbit pAb (A12450) at dilution of 1:100 (40x lens). Perform microwave antigen retrieval with 10 mM PBS buffer pH 7.2 before commencing with IHC staining protocol.