

A1245

Leader in Biomolecular Solutions for Life Science



PSMA3 Rabbit pAb

Catalog No.: A1245

Basic Information

Observed MW

28kDa

Calculated MW

28kDa

Category

Mouse Monoclonal Antibody

Applications

WB, IHC-P, IP, ELISA

Cross-Reactivity

Human, Mouse, Rat

Background

The proteasome is a multicatalytic proteinase complex with a highly ordered ring-shaped 20S core structure. The core structure is composed of 4 rings of 28 non-identical subunits; 2 rings are composed of 7 alpha subunits and 2 rings are composed of 7 beta subunits. Proteasomes are distributed throughout eukaryotic cells at a high concentration and cleave peptides in an ATP/ubiquitin-dependent process in a non-lysosomal pathway. An essential function of a modified proteasome, the immunoproteasome, is the processing of class I MHC peptides. This gene encodes a member of the peptidase T1A family, that is a 20S core alpha subunit. Two alternative transcripts encoding different isoforms have been identified.

Recommended Dilutions

WB 1:500 - 1:1000

IP 0.5µg-4µg antibody for
200µg-400µg extracts of
whole cells

IHC-P 1:50 - 1:200

Immunogen Information

Gene ID

5684

Swiss Prot

P25788

Immunogen

Recombinant fusion protein containing a sequence corresponding to amino acids 1-255 of human PSMA3 (NP_002779.1).

Synonyms

HC8; PSC3; PSMA3

Contact



www.abclonal.com

Product Information

Source

Rabbit

Isotype

IgG

Purification

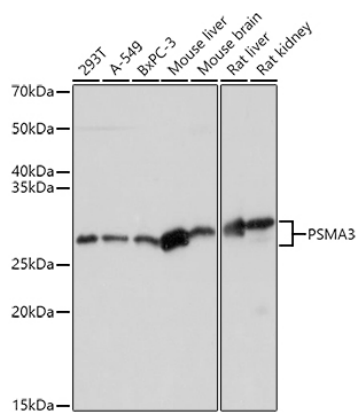
Affinity purification

Storage

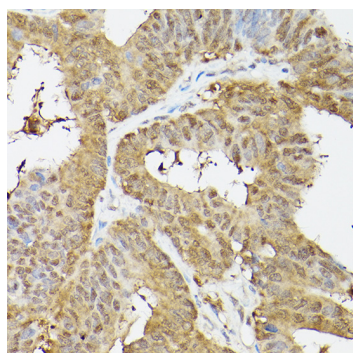
Store at -20°C. Avoid freeze / thaw cycles.

Buffer: PBS with 0.01% thimerosal, 50% glycerol, pH7.3.

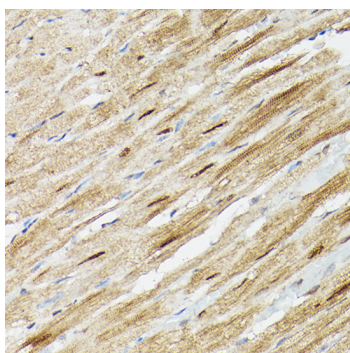
Validation Data



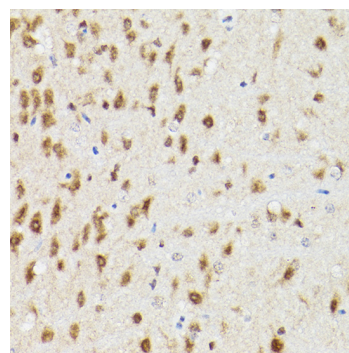
Western blot analysis of various lysates using PSMA3 Rabbit pAb (A1245) at 1:1000 dilution.
 Secondary antibody: HRP Goat Anti-Rabbit IgG (H+L) (AS014) at 1:10000 dilution.
 Lysates/proteins: 25µg per lane.
 Blocking buffer: 3% nonfat dry milk in TBST.
 Detection: ECL Basic Kit (RM00020).
 Exposure time: 3s.



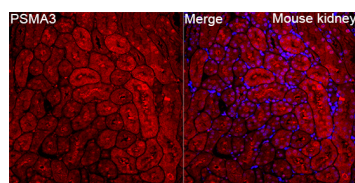
Immunohistochemistry analysis of PSMA3 in paraffin-embedded human colon carcinoma using PSMA3 Rabbit pAb (A1245) at dilution of 1:100 (40x lens). Perform high pressure antigen retrieval with 10 mM citrate buffer pH 6.0 before commencing with IHC staining protocol.



Immunohistochemistry analysis of PSMA3 in paraffin-embedded mouse heart using PSMA3 Rabbit pAb (A1245) at dilution of 1:100 (40x lens). Perform high pressure antigen retrieval with 10 mM citrate buffer pH 6.0 before commencing with IHC staining protocol.

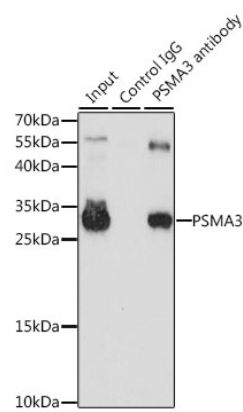


Immunohistochemistry analysis of PSMA3 in paraffin-embedded rat brain using PSMA3 Rabbit pAb (A1245) at dilution of 1:100 (40x lens). Perform high pressure antigen retrieval with 10 mM citrate buffer pH 6.0 before commencing with IHC staining protocol.



Immunofluorescence analysis of Mouse kidney tissue using PSMA3 Rabbit pAb (A1245) at a dilution of 1:400 (40x lens). Secondary antibody: Cy3-conjugated Goat anti-Rabbit IgG (H+L) (AS007) at 1:500 dilution. Blue: DAPI for nuclear staining. High pressure antigen retrieval performed with 0.01M Citrate Buffer (pH 6.0) prior to IF staining.

Validation Data



Immunoprecipitation analysis of 200 µg extracts of HL-60 cells, using 3 µg PSMA3 antibody (A1245). Western blot was performed from the immunoprecipitate using PSMA3 antibody (A1245) at a dilution of 1:1000.