

A12433

Leader in Biomolecular Solutions for Life Science



ELN Rabbit pAb

Catalog No.: A12433

1 Publications

Basic Information

Observed MW

Calculated MW
68kDa

Category
Polyclonal Antibody

Applications
IHC-P, ELISA

Cross-Reactivity
Human

Background

This gene encodes a protein that is one of the two components of elastic fibers. Elastic fibers comprise part of the extracellular matrix and confer elasticity to organs and tissues including the heart, skin, lungs, ligaments, and blood vessels. The encoded protein is rich in hydrophobic amino acids such as glycine and proline, which form mobile hydrophobic regions bounded by crosslinks between lysine residues. Degradation products of the encoded protein, known as elastin-derived peptides or elastokines, bind the elastin receptor complex and other receptors and stimulate migration and proliferation of monocytes and skin fibroblasts. Elastokines can also contribute to cancer progression. Deletions and mutations in this gene are associated with supravalvular aortic stenosis (SVAS) and autosomal dominant cutis laxa.

Recommended Dilutions

IHC-P 1:50 - 1:200

Immunogen Information

Gene ID 2006	Swiss Prot P15502
------------------------	-----------------------------

Immunogen

Recombinant fusion protein containing a sequence corresponding to amino acids 1-97 of human ELN (P15502).

Synonyms

WS; WBS; SVAS; ADCL1; ELN

Contact



www.abclonal.com

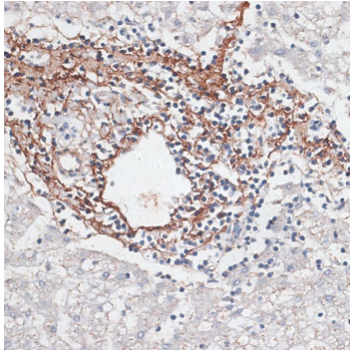
Product Information

Source Rabbit	Isotype IgG	Purification Affinity purification
-------------------------	-----------------------	--

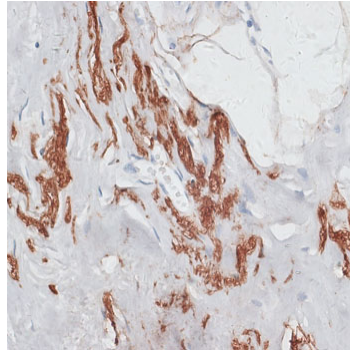
Storage

Store at -20°C. Avoid freeze / thaw cycles.
Buffer: PBS with 0.02% sodium azide, 50% glycerol, pH 7.3.

Validation Data



Immunohistochemistry analysis of paraffin-embedded human liver cancer using ELN antibody (A12433) at dilution of 1:100 (40x lens). Perform microwave antigen retrieval with 10 mM PBS buffer pH 7.2 before commencing with IHC staining protocol.



Immunohistochemistry analysis of paraffin-embedded human breast using ELN antibody (A12433) at dilution of 1:100 (40x lens). Perform microwave antigen retrieval with 10 mM PBS buffer pH 7.2 before commencing with IHC staining protocol.