

A12423

Leader in Biomolecular Solutions for Life Science



# Clathrin heavy chain Rabbit pAb

Catalog No.: A12423

5 Publications

## Basic Information

### Observed MW

191kDa

### Calculated MW

192kDa

### Category

Polyclonal Antibody

### Applications

WB,IF/ICC,ELISA

### Cross-Reactivity

Human,Mouse,Rat

## Background

Clathrin is a major protein component of the cytoplasmic face of intracellular organelles, called coated vesicles and coated pits. These specialized organelles are involved in the intracellular trafficking of receptors and endocytosis of a variety of macromolecules. The basic subunit of the clathrin coat is composed of three heavy chains and three light chains.

## Recommended Dilutions

WB	1:500 - 1:2000
IF/ICC	1:50 - 1:200

## Immunogen Information

### Gene ID

1213

### Swiss Prot

Q00610

### Immunogen

Recombinant fusion protein containing a sequence corresponding to amino acids 1451-1675 of human Clathrin heavy chain (NP\_004850.1).

### Synonyms

Hc; CHC; CHC17; MRD56; CLH-17; CLTCL2; Clathrin heavy chain

## Contact



[www.abclonal.com](http://www.abclonal.com)

## Product Information

### Source

Rabbit

### Isotype

IgG

### Purification

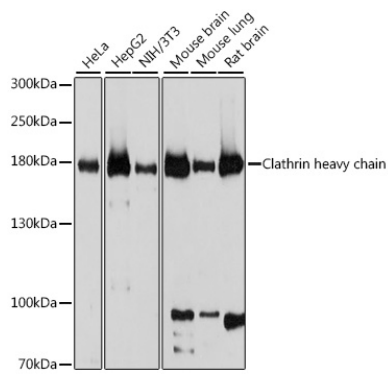
Affinity purification

### Storage

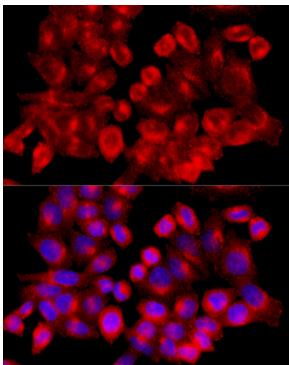
Store at -20°C. Avoid freeze / thaw cycles.

Buffer: PBS with 0.01% thimerosal, 50% glycerol, pH7.3.

## Validation Data



Western blot analysis of various lysates using Clathrin heavy chain Rabbit pAb (A12423) at 1:1000 dilution.  
Secondary antibody: HRP Goat Anti-Rabbit IgG (H+L) (AS014) at 1:10000 dilution.  
Lysates/proteins: 25µg per lane.  
Blocking buffer: 3% nonfat dry milk in TBST.  
Detection: ECL Basic Kit (RM00020).  
Exposure time: 5s.



Immunofluorescence analysis of HeLa cells using Clathrin heavy chain Rabbit pAb (A12423) at dilution of 1:100 (40x lens).  
Secondary antibody: Cy3 Goat Anti-Rabbit IgG (H+L) (AS007) at 1:500 dilution. Blue: DAPI for nuclear staining.