

# PRSS1 Rabbit pAb

Catalog No.: A1242 **3 Publications**

## Basic Information

### Observed MW

35kDa

### Calculated MW

24kDa

### Category

Primary antibody

### Applications

ELISA, WB, IHC-P

### Cross-Reactivity

Human, Mouse

## Background

This gene encodes a trypsinogen, which is a member of the trypsin family of serine proteases. This enzyme is secreted by the pancreas and cleaved to its active form in the small intestine. It is active on peptide linkages involving the carboxyl group of lysine or arginine. Mutations in this gene are associated with hereditary pancreatitis. This gene and several other trypsinogen genes are localized to the T cell receptor beta locus on chromosome 7.

## Recommended Dilutions

<b>WB</b>	1:500 - 1:2000
<b>IHC-P</b>	1:100 - 1:200

## Immunogen Information

### Gene ID

5644

### Swiss Prot

P07477

### Immunogen

Recombinant fusion protein containing a sequence corresponding to amino acids 24-247 of human PRSS1 (NP\_002760.1).

### Synonyms

TRP1; TRY1; TRY4; TRYP1; PRSS1

## Contact

 | [www.abclonal.com](http://www.abclonal.com)

## Product Information

### Source

Rabbit

### Isotype

IgG

### Purification

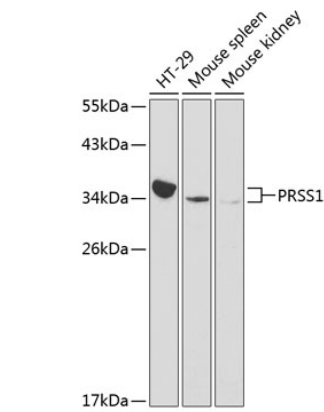
Affinity purification

### Storage

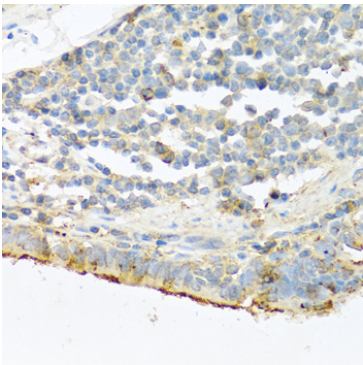
Store at -20°C. Avoid freeze / thaw cycles.

Buffer: PBS with 0.02% sodium azide, 50% glycerol, pH7.3.

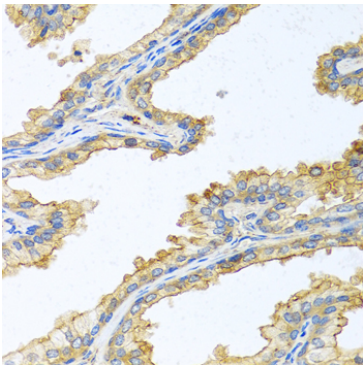
# Validation Data



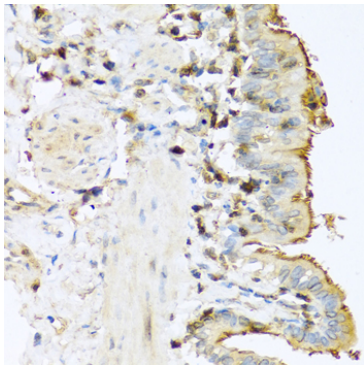
Western blot analysis of extracts of various cell lines, using PRSS1 antibody (A1242) at 1:1000 dilution.  
Secondary antibody: HRP Goat Anti-Rabbit IgG (H+L) (AS014) at 1:10000 dilution.  
Lysates/proteins: 25µg per lane.  
Blocking buffer: 3% nonfat dry milk in TBST.



Immunohistochemistry analysis of paraffin-embedded human lung cancer using PRSS1 antibody (A1242) at dilution of 1:100 (40x lens). Perform microwave antigen retrieval with 10 mM PBS buffer pH 7.2 before commencing with IHC staining protocol.



Immunohistochemistry analysis of paraffin-embedded human prostate using PRSS1 antibody (A1242) at dilution of 1:100 (40x lens). Perform microwave antigen retrieval with 10 mM PBS buffer pH 7.2 before commencing with IHC staining protocol.



Immunohistochemistry analysis of paraffin-embedded mouse lung using PRSS1 antibody (A1242) at dilution of 1:100 (40x lens). Perform microwave antigen retrieval with 10 mM PBS buffer pH 7.2 before commencing with IHC staining protocol.