

A12402

Leader in Biomolecular Solutions for Life Science



RhoB Rabbit pAb

Catalog No.: A12402

Basic Information

Observed MW

22kDa

Calculated MW

22kDa

Category

Polyclonal Antibody

Applications

WB, ELISA

Cross-Reactivity

Mouse, Rat

Background

Predicted to enable GTP binding activity; GTPase activity; and protein kinase binding activity. Involved in several processes, including cellular response to hydrogen peroxide; cellular response to ionizing radiation; and regulation of cell migration. Located in cleavage furrow and endosome membrane. Biomarker of breast cancer.

Recommended Dilutions

WB 1:500 - 1:2000

Immunogen Information

Gene ID

388

Swiss Prot

P62745

Immunogen

Recombinant fusion protein containing a sequence corresponding to amino acids 1-196 of human RhoB (NP_004031.1).

Synonyms

ARH6; ARHB; RHOH6; MST081; MSTP081; RhoB

Contact



www.abclonal.com

Product Information

Source

Rabbit

Isotype

IgG

Purification

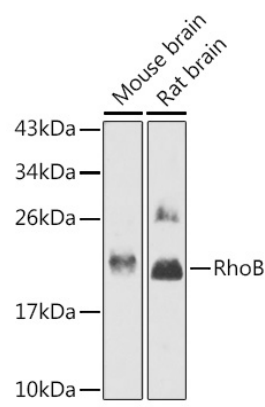
Affinity purification

Storage

Store at -20°C. Avoid freeze / thaw cycles.

Buffer: PBS with 0.02% sodium azide, 50% glycerol, pH 7.3.

Validation Data



Western blot analysis of various lysates using RhoB Rabbit pAb (A12402) at 1:1000 dilution.
Secondary antibody: HRP Goat Anti-Rabbit IgG (H+L) (A5014) at 1:10000 dilution.
Lysates/proteins: 25µg per lane.
Blocking buffer: 3% nonfat dry milk in TBST.
Detection: ECL Enhanced Kit (RM00021).
Exposure time: 90s.