

A12371

Leader in Biomolecular Solutions for Life Science



PLSCR3 Rabbit pAb

Catalog No.: A12371

1 Publications

Basic Information

Observed MW

32kDa

Calculated MW

32kDa

Category

Mouse Monoclonal Antibody

Applications

WB,IF/ICC,ELISA

Cross-Reactivity

Human,Mouse,Rat

Background

Enables several functions, including calcium-dependent protein binding activity; metal ion binding activity; and phospholipid scramblase activity. Involved in several processes, including cardiolipin biosynthetic process; regulation of apoptotic process; and regulation of release of cytochrome c from mitochondria. Located in cytosol; mitochondrion; and plasma membrane.

Recommended Dilutions

WB 1:500 - 1:2000

IF/ICC 1:50 - 1:100

Immunogen Information

Gene ID

57048

Swiss Prot

Q9NRY6

Immunogen

Recombinant fusion protein containing a sequence corresponding to amino acids 1-295 of human PLSCR3 (NP_065093.2).

Synonyms

PLSCR3

Contact



www.abclonal.com

Product Information

Source

Rabbit

Isotype

IgG

Purification

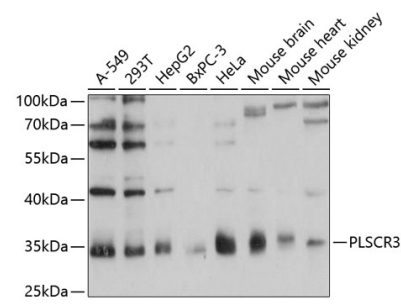
Affinity purification

Storage

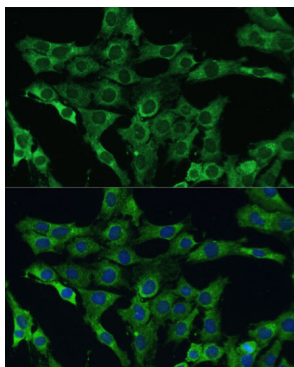
Store at -20°C. Avoid freeze / thaw cycles.

Buffer: PBS with 0.01% thimerosal, 50% glycerol, pH7.3.

Validation Data



Western blot analysis of various lysates using PLSCR3 Rabbit pAb (A12371) at 1:1000 dilution.
Secondary antibody: HRP Goat Anti-Rabbit IgG (H+L) (AS014) at 1:10000 dilution.
Lysates/proteins: 25µg per lane.
Blocking buffer: 3% nonfat dry milk in TBST.
Detection: ECL Basic Kit (RM00020).
Exposure time: 1s.



Immunofluorescence analysis of C6 cells using PLSCR3 Rabbit pAb (A12371) at dilution of 1:100 (40x lens). Secondary antibody: Cy3 Goat Anti-Rabbit IgG (H+L) (AS007) at 1:500 dilution. Blue: DAPI for nuclear staining.