

A1232

Leader in Biomolecular Solutions for Life Science



## Glycophorin C (GYPC) Rabbit pAb

Catalog No.: A1232

### Basic Information

**Observed MW**

34kDa

**Calculated MW**

14kDa

**Category**

Polyclonal Antibody

**Applications**

WB, ELISA

**Cross-Reactivity**

Human, Mouse

### Background

Glycophorin C (GYPC) is an integral membrane glycoprotein. It is a minor species carried by human erythrocytes, but plays an important role in regulating the mechanical stability of red cells. A number of glycophorin C mutations have been described. The Gerbich and Yus phenotypes are due to deletion of exon 3 and 2, respectively. The Webb and Duch antigens, also known as glycophorin D, result from single point mutations of the glycophorin C gene. The glycophorin C protein has very little homology with glycophorins A and B. Alternate splicing results in multiple transcript variants.

### Recommended Dilutions

WB 1:500 - 1:2000

### Immunogen Information

**Gene ID**

2995

**Swiss Prot**

P04921

**Immunogen**

Recombinant fusion protein containing a sequence corresponding to amino acids 1-128 of human Glycophorin C (Glycophorin C (GYPC)) (NP\_002092.1).

**Synonyms**

GE; GPC; GPD; GYPD; CD236; PAS-2; CD236R; PAS-2'; Glycophorin C (GYPC)

### Contact



[www.abclonal.com](http://www.abclonal.com)

### Product Information

**Source**

Rabbit

**Isotype**

IgG

**Purification**

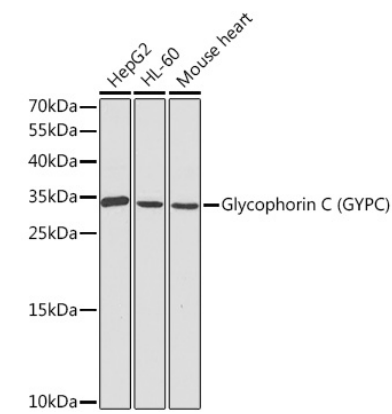
Affinity purification

**Storage**

Store at -20°C. Avoid freeze / thaw cycles.

Buffer: PBS with 0.02% sodium azide, 50% glycerol, pH 7.3.

Validation Data



Western blot analysis of extracts of various cell lines, using Glycophorin C (Glycophorin C (GYPC)) antibody (A1232) at 1:1000 dilution.  
Secondary antibody: HRP Goat Anti-Rabbit IgG (H+L) (AS014) at 1:10000 dilution.  
Lysates/proteins: 25µg per lane.  
Blocking buffer: 3% nonfat dry milk in TBST.  
Detection: ECL Basic Kit (RM00020).  
Exposure time: 90s.