

# β-Tubulin Rabbit mAb

Catalog No.: A12289 **Recombinant** **22 Publications**

## Basic Information

### Observed MW

55kDa

### Calculated MW

50kDa

### Category

Primary antibody

### Applications

ELISA, WB, IHC-P, IF/ICC, IP

### Cross-Reactivity

Human, Mouse, Rat

### CloneNo number

ARC0203

## Background

This gene encodes a beta tubulin protein. This protein forms a dimer with alpha tubulin and acts as a structural component of microtubules. Mutations in this gene cause cortical dysplasia, complex, with other brain malformations 6. Alternative splicing results in multiple splice variants. There are multiple pseudogenes for this gene on chromosomes 1, 6, 7, 8, 9, and 13.

## Recommended Dilutions

<b>WB</b>	1:5000 - 1:10000
<b>IHC-P</b>	1:50 - 1:200
<b>IF/ICC</b>	1:50 - 1:200
<b>IP</b>	0.5µg-4µg antibody for 200µg-400µg extracts of whole cells

## Immunogen Information

<b>Gene ID</b>	<b>Swiss Prot</b>
203068	P07437

### Immunogen

A synthetic peptide corresponding to a sequence within amino acids 250-350 of human β-Tubulin (P07437).

### Synonyms

M40; TUBB1; TUBB5; CDCBM6; CSCSC1; OK/SW-cl.56; β-Tubulin

## Contact

 | [www.abclonal.com](http://www.abclonal.com)

## Product Information

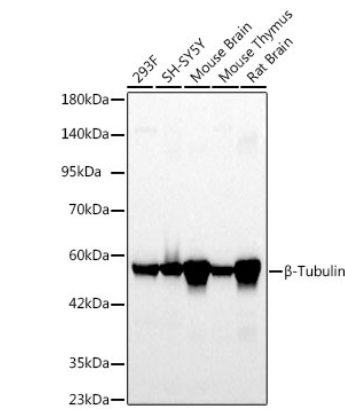
<b>Source</b>	<b>Isotype</b>	<b>Purification</b>
Rabbit	IgG	Affinity purification

### Storage

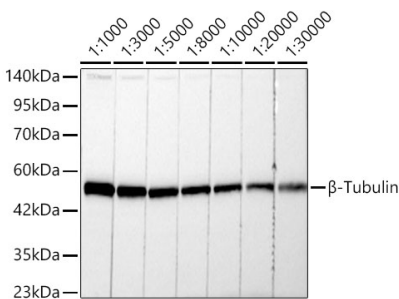
Store at -20°C. Avoid freeze / thaw cycles.

Buffer: PBS with 0.02% sodium azide, 0.05% BSA, 50% glycerol, pH7.3.

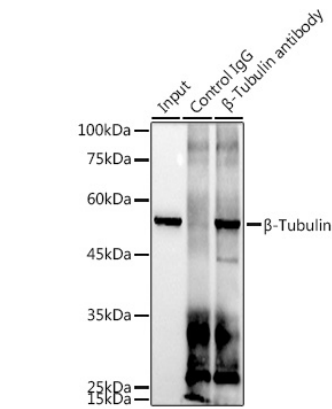
Validation Data



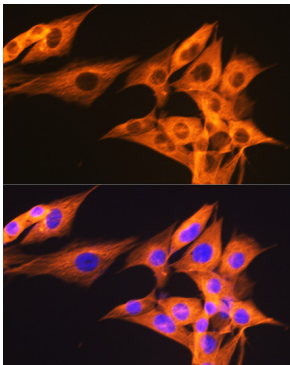
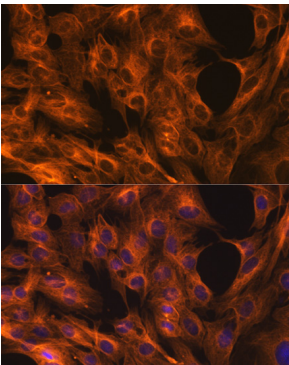
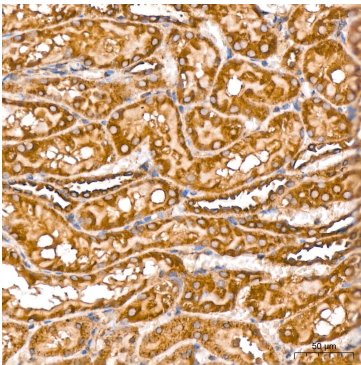
Western blot analysis of various lysates using  $\beta$ -Tubulin Rabbit mAb (A12289) at 1:5000 dilution.  
Secondary antibody: HRP Goat Anti-Rabbit IgG (H+L) (AS014) at 1:10000 dilution.  
Lysates/proteins: 25 $\mu$ g per lane.  
Blocking buffer: 3% nonfat dry milk in TBST.  
Detection: ECL Basic Kit (RM00020).  
Exposure time: 20s.



Western blot analysis of lysates from 293F cells, using  $\beta$ -Tubulin Rabbit mAb (A12289) at 1:1000-1:30000 dilution.  
Secondary antibody: HRP Goat Anti-Rabbit IgG (H+L) (AS014) at 1:10000 dilution.  
Lysates/proteins: 25 $\mu$ g per lane.  
Blocking buffer: 3% nonfat dry milk in TBST.  
Detection: ECL Basic Kit (RM00020).  
Exposure time: 10s.



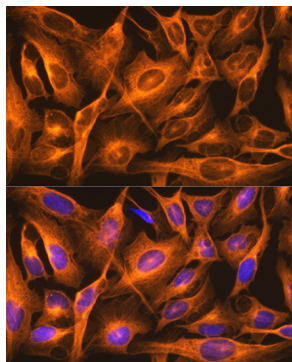
Immunoprecipitation analysis of 300  $\mu$ g extracts of 293T cells using 3  $\mu$ g  $\beta$ -Tubulin antibody (A12289). Western blot was performed from the immunoprecipitate using  $\beta$ -Tubulin antibody (A12289) at a dilution of 1:1000.



## Validation Data

---

Immunohistochemistry analysis of  $\beta$ -Tubulin in paraffin-embedded rat kidney tissue using  $\beta$ -Tubulin Rabbit mAb (A12289) at a dilution of 1:200 (40x lens). High pressure antigen retrieval was performed with 0.01 M citrate buffer (pH 6.0) prior to IHC staining.



Immunofluorescence analysis of C6 cells using  $\beta$ -Tubulin Rabbit mAb (A12289) at dilution of 1:100. Blue: DAPI for nuclear staining.

Immunofluorescence analysis of NIH/3T3 cells using  $\beta$ -Tubulin Rabbit mAb (A12289) at dilution of 1:100. Blue: DAPI for nuclear staining.

Immunofluorescence analysis of U2OS cells using  $\beta$ -Tubulin Rabbit mAb (A12289) at dilution of 1:100. Blue: DAPI for nuclear staining.