

A12256

Leader in Biomolecular Solutions for Life Science



## OMD Rabbit pAb

Catalog No.: A12256

### Basic Information

**Observed MW**

49kDa

**Calculated MW**

49kDa

**Category**

Polyclonal Antibody

**Applications**

WB, ELISA

**Cross-Reactivity**

Mouse

### Background

Predicted to be involved in cell adhesion and regulation of bone mineralization. Located in extracellular exosome.

### Recommended Dilutions

WB 1:500 - 1:2000

### Immunogen Information

**Gene ID**

4958

**Swiss Prot**

Q99983

**Immunogen**

Recombinant fusion protein containing a sequence corresponding to amino acids 122-421 of human OMD (NP\_005005.1).

**Synonyms**

OSAD; SLRR2C; OMD

### Contact



[www.abclonal.com](http://www.abclonal.com)

### Product Information

**Source**

Rabbit

**Isotype**

IgG

**Purification**

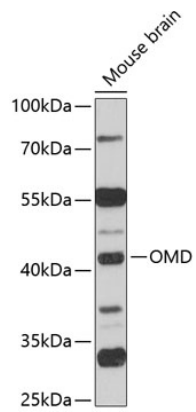
Affinity purification

**Storage**

Store at -20°C. Avoid freeze / thaw cycles.

Buffer: PBS with 0.01% thimerosal, 50% glycerol, pH7.3.

## Validation Data



Western blot analysis of lysates from mouse brain, using OMD Rabbit pAb (A12256) at 1:1000 dilution.  
Secondary antibody: HRP Goat Anti-Rabbit IgG (H+L) (AS014) at 1:10000 dilution.  
Lysates/proteins: 25µg per lane.  
Blocking buffer: 3% nonfat dry milk in TBST.  
Detection: ECL Basic Kit (RM00020).  
Exposure time: 90s.