

# ESAM Rabbit pAb

Catalog No.: A12210

## Basic Information

### Observed MW

60kDa

### Calculated MW

41kDa

### Category

Primary antibody

### Applications

ELISA, WB

### Cross-Reactivity

Human

## Background

Enables cell-cell adhesion mediator activity. Involved in several processes, including bicellular tight junction assembly; cell-cell adhesion; and regulation of actin cytoskeleton organization. Located in cell-cell junction and plasma membrane. Part of protein-containing complex.

## Recommended Dilutions

WB 1:500 - 1:2000

## Immunogen Information

### Gene ID

90952

### Swiss Prot

Q96AP7

### Immunogen

Recombinant fusion protein containing a sequence corresponding to amino acids 30-248 of human ESAM (NP\_620411.2).

### Synonyms

W117m; ESAM

## Contact

 | [www.abclonal.com](http://www.abclonal.com)

## Product Information

### Source

Rabbit

### Isotype

IgG

### Purification

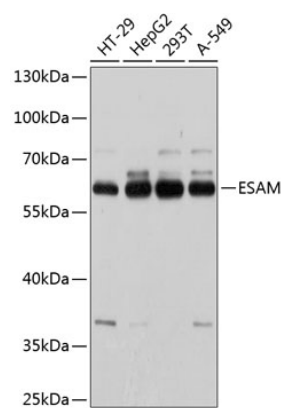
Affinity purification

### Storage

Store at -20°C. Avoid freeze / thaw cycles.

Buffer: PBS with 0.01% thimerosal, 50% glycerol, pH7.3.

# Validation Data



Western blot analysis of various lysates using ESAM Rabbit pAb (A12210) at 1:1000 dilution.  
Secondary antibody: HRP Goat Anti-Rabbit IgG (H+L) (AS014) at 1:10000 dilution.  
Lysates/proteins: 25µg per lane.  
Blocking buffer: 3% nonfat dry milk in TBST.  
Detection: ECL Basic Kit (RM00020).  
Exposure time: 5s.