

A1220

Leader in Biomolecular Solutions for Life Science



APOH Rabbit pAb

Catalog No.: A1220

Basic Information

Observed MW

45kDa

Calculated MW

38kDa

Category

Polyclonal Antibody

Applications

WB,IF/ICC,ELISA

Cross-Reactivity

Human

Background

Apolipoprotein H, also known as beta-2-glycoprotein I, is a component of circulating plasma lipoproteins. It has been implicated in a variety of physiologic pathways including lipoprotein metabolism, coagulation, hemostasis, and the production of antiphospholipid autoantibodies. APOH may be a required cofactor for anionic phospholipid binding by the antiphospholipid autoantibodies found in sera of many patients with lupus and primary antiphospholipid syndrome (APS). The anti-beta (2) glycoprotein I antibodies from APS patients, mediate inhibition of activated protein C which has anticoagulant properties. Because beta-2-GPI is the main autoantigen in patients with APS, the disruption of this pathway by autoantibodies may be an important mechanism for thrombosis in patients with APS.

Recommended Dilutions

WB	1:500 - 1:2000
IF/ICC	1:50 - 1:200

Immunogen Information

Gene ID

350

Swiss Prot

P02749

Immunogen

Recombinant fusion protein containing a sequence corresponding to amino acids 21-345 of human APOH (NP_000033.2).

Synonyms

BG; B2G1; B2GP1; APOH

Contact



www.abclonal.com

Product Information

Source

Rabbit

Isotype

IgG

Purification

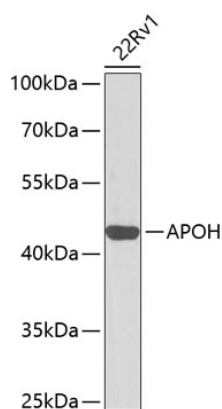
Affinity purification

Storage

Store at -20°C. Avoid freeze / thaw cycles.

Buffer: PBS with 0.02% sodium azide, 50% glycerol, pH 7.3.

Validation Data



Western blot analysis of lysates from 22Rv1 cells, using APOH Rabbit pAb (A1220) at 1:1000 dilution.
Secondary antibody: HRP Goat Anti-Rabbit IgG (H+L) (A5014) at 1:10000 dilution.
Lysates/proteins: 25µg per lane.
Blocking buffer: 3% nonfat dry milk in TBST.
Detection: ECL Basic Kit (RM00020).
Exposure time: 30s.