

A12169

Leader in Biomolecular Solutions for Life Science



## OSTF1 Rabbit pAb

Catalog No.: A12169

### Basic Information

**Observed MW**

26kDa

**Calculated MW**

24kDa

**Category**

Polyclonal Antibody

**Applications**

WB, ELISA

**Cross-Reactivity**

Human, Mouse, Rat

### Background

Osteoclast-stimulating factor-1 is an intracellular protein produced by osteoclasts that indirectly induces osteoclast formation and bone resorption (Reddy et al., 1998 [PubMed 10092216]).

### Recommended Dilutions

WB 1:500 - 1:1000

### Immunogen Information

**Gene ID**

26578

**Swiss Prot**

Q92882

**Immunogen**

Recombinant fusion protein containing a sequence corresponding to amino acids 15-214 of human OSTF1 (NP\_036515.4).

**Synonyms**

OSF; SH3P2; bA235O14.1; OSTF1

### Contact



[www.abclonal.com](http://www.abclonal.com)

### Product Information

**Source**

Rabbit

**Isotype**

IgG

**Purification**

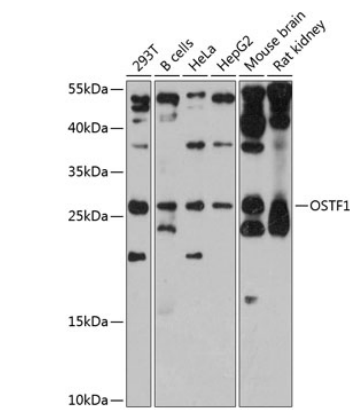
Affinity purification

**Storage**

Store at -20°C. Avoid freeze / thaw cycles.

Buffer: PBS with 0.02% sodium azide, 50% glycerol, pH 7.3.

# Validation Data



Western blot analysis of various lysates using OSTF1 Rabbit pAb (A12169) at 1:3000 dilution.  
Secondary antibody: HRP Goat Anti-Rabbit IgG (H+L) (A5014) at 1:10000 dilution.  
Lysates/proteins: 25µg per lane.  
Blocking buffer: 3% nonfat dry milk in TBST.  
Detection: ECL Enhanced Kit (RM00021).  
Exposure time: 30s.