

A12156

Leader in Biomolecular Solutions for Life Science



Cytokeratin 4 (KRT4) Rabbit pAb

Catalog No.: A12156

Basic Information

Observed MW

57kDa

Calculated MW

56kDa

Category

Polyclonal Antibody

Applications

WB, ELISA

Cross-Reactivity

Human

Background

The protein encoded by this gene is a member of the keratin gene family. The type II cytokeratins consist of basic or neutral proteins which are arranged in pairs of heterotypic keratin chains coexpressed during differentiation of simple and stratified epithelial tissues. This type II cytokeratin is specifically expressed in differentiated layers of the mucosal and esophageal epithelia with family member KRT13. Mutations in these genes have been associated with White Sponge Nevus, characterized by oral, esophageal, and anal leukoplakia. The type II cytokeratins are clustered in a region of chromosome 12q12-q13.

Recommended Dilutions

WB 1:500 - 1:2000

Immunogen Information

Gene ID

3851

Swiss Prot

P19013

Immunogen

Recombinant fusion protein containing a sequence corresponding to amino acids 446-520 of human Cytokeratin 4 (Cytokeratin 4 (KRT4)) (NP_002263.3).

Synonyms

K4; CK4; CK-4; CYK4; WSN1; Cytokeratin 4 (KRT4)

Contact



www.abclonal.com

Product Information

Source

Rabbit

Isotype

IgG

Purification

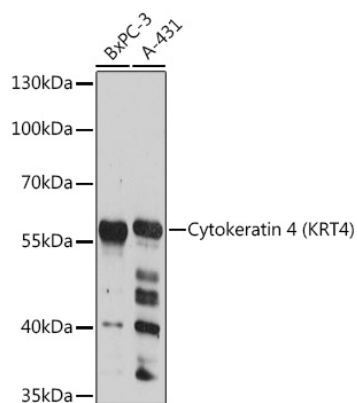
Affinity purification

Storage

Store at -20°C. Avoid freeze / thaw cycles.

Buffer: PBS with 0.01% thimerosal, 50% glycerol, pH7.3.

Validation Data



Western blot analysis of various lysates using Cytokeratin 4 (KRT4) Rabbit pAb (A12156) at 1:3000 dilution.

Secondary antibody: HRP Goat Anti-Rabbit IgG (H+L) (AS014) at 1:10000 dilution.

Lysates/proteins: 25µg per lane.

Blocking buffer: 3% nonfat dry milk in TBST.

Detection: ECL Basic Kit (RM00020).

Exposure time: 15s.