

A12155

Leader in Biomolecular Solutions for Life Science



# Cytokeratin 15 (KRT15) Rabbit pAb

Catalog No.: A12155

## Basic Information

### Observed MW

49kDa

### Calculated MW

49kDa

### Category

Mouse Monoclonal Antibody

### Applications

WB, ELISA

### Cross-Reactivity

Human, Mouse, Rat

## Background

The protein encoded by this gene is a member of the keratin gene family. The keratins are intermediate filament proteins responsible for the structural integrity of epithelial cells and are subdivided into cytokeratins and hair keratins. Most of the type I cytokeratins consist of acidic proteins which are arranged in pairs of heterotypic keratin chains and are clustered in a region on chromosome 17q21.2.

## Recommended Dilutions

WB 1:500 - 1:2000

## Immunogen Information

### Gene ID

3866

### Swiss Prot

P19012

### Immunogen

Recombinant fusion protein containing a sequence corresponding to amino acids 360-450 of human Cytokeratin 15 (Cytokeratin 15 (KRT15)) (NP\_002266.2).

### Synonyms

K15; CK15; K1CO; Cytokeratin 15 (KRT15)

## Contact



[www.abclonal.com](http://www.abclonal.com)

## Product Information

### Source

Rabbit

### Isotype

IgG

### Purification

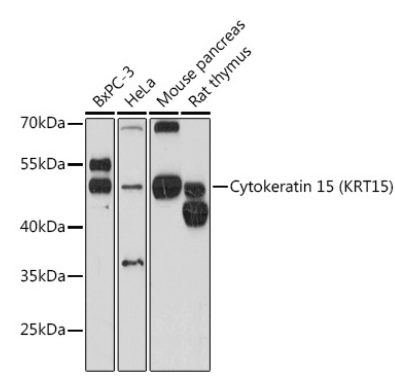
Affinity purification

### Storage

Store at -20°C. Avoid freeze / thaw cycles.

Buffer: PBS with 0.01% thimerosal, 50% glycerol, pH 7.3.

Validation Data



Western blot analysis of various lysates using Cytokeratin 15 (KRT15) Rabbit pAb (A12155) at 1:3000 dilution.  
Secondary antibody: HRP Goat Anti-Rabbit IgG (H+L) (AS014) at 1:10000 dilution.  
Lysates/proteins: 25µg per lane.  
Blocking buffer: 3% nonfat dry milk in TBST.  
Detection: ECL Basic Kit (RM00020).  
Exposure time: 90s.