

A12073

Leader in Biomolecular Solutions for Life Science



## SEL1L Rabbit pAb

Catalog No.: A12073

1 Publications

### Basic Information

#### Observed MW

100kDa

#### Calculated MW

89kDa

#### Category

Polyclonal Antibody

#### Applications

WB, IF/ICC, ELISA

#### Cross-Reactivity

Human, Mouse, Rat

### Background

The protein encoded by this gene is part of a protein complex required for the retrotranslocation or dislocation of misfolded proteins from the endoplasmic reticulum lumen to the cytosol, where they are degraded by the proteasome in a ubiquitin-dependent manner. Alternatively spliced transcript variants encoding different isoforms have been found for this gene.

### Recommended Dilutions

|        |                |
|--------|----------------|
| WB     | 1:500 - 1:2000 |
| IF/ICC | 1:50 - 1:200   |

### Immunogen Information

#### Gene ID

6400

#### Swiss Prot

Q9UBV2

#### Immunogen

Recombinant fusion protein containing a sequence corresponding to amino acids 22-190 of human SEL1L (NP\_005056.3).

#### Synonyms

Hrd3; SEL1L1; PRO1063; SEL1-LIKE; SEL1L

### Contact



[www.abclonal.com](http://www.abclonal.com)

### Product Information

#### Source

Rabbit

#### Isotype

IgG

#### Purification

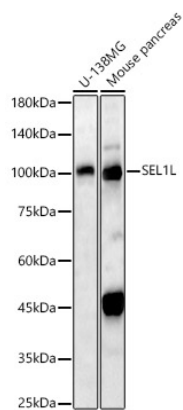
Affinity purification

#### Storage

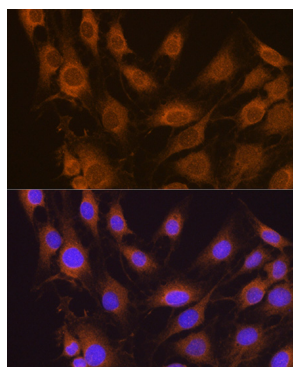
Store at -20°C. Avoid freeze / thaw cycles.

Buffer: PBS with 0.01% thimerosal, 50% glycerol, pH7.3.

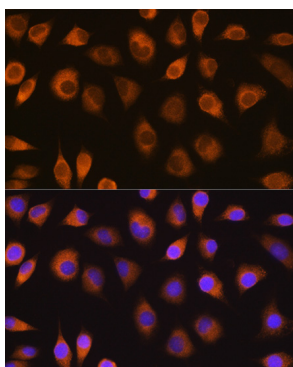
## Validation Data



Western blot analysis of various lysates, using SEL1L Rabbit pAb (A12073) at 1:1000 dilution.  
Secondary antibody: HRP Goat Anti-Rabbit IgG (H+L) (A5014) at 1:10000 dilution.  
Lysates/proteins: 25ug per lane.  
Blocking buffer: 3% nonfat dry milk in TBST.  
Detection: ECL Basic Kit (RM00020).  
Exposure time: 180s.



Immunofluorescence analysis of C6 cells using SEL1L Rabbit pAb (A12073) at dilution of 1:100. Blue: DAPI for nuclear staining.



Immunofluorescence analysis of L929 cells using SEL1L Rabbit pAb (A12073) at dilution of 1:100. Blue: DAPI for nuclear staining.