

# LCN6 Rabbit pAb

Catalog No.: A1204

## Basic Information

### Observed MW

18kDa

### Calculated MW

18kDa

### Category

Primary antibody

### Applications

ELISA, WB

### Cross-Reactivity

Mouse, Rat

## Background

Predicted to enable small molecule binding activity. Predicted to be involved in single fertilization. Predicted to be located in extracellular region.

## Recommended Dilutions

WB 1:500 - 1:2000

## Immunogen Information

### Gene ID

158062

### Swiss Prot

P62502

### Immunogen

Recombinant fusion protein containing a sequence corresponding to amino acids 25-120 of human LCN6 (NP\_945184.1).

### Synonyms

LCN5; hLcn5; UNQ643; LCN6

## Contact

 | [www.abclonal.com](http://www.abclonal.com)

## Product Information

### Source

Rabbit

### Isotype

IgG

### Purification

Affinity purification

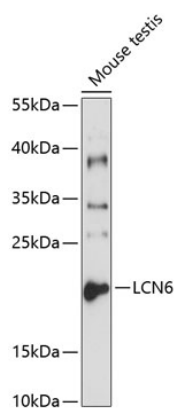
### Storage

Store at -20°C. Avoid freeze / thaw cycles.

Buffer: PBS with 0.01% thimerosal, 50% glycerol, pH7.3.

## Validation Data

---



Western blot analysis of lysates from mouse testis, using LCN6 Rabbit pAb (A1204) at 1:1000 dilution.  
Secondary antibody: HRP Goat Anti-Rabbit IgG (H+L) (A5014) at 1:10000 dilution.  
Lysates/proteins: 25µg per lane.  
Blocking buffer: 3% nonfat dry milk in TBST.  
Detection: ECL Basic Kit (RM00020).  
Exposure time: 5s.