

KL Rabbit pAb

Catalog No.: A12028 **9 Publications**

Basic Information

Observed MW

65kDa, 120kDa

Calculated MW

116kDa

Category

Primary antibody

Applications

ELISA, WB

Cross-Reactivity

Human, Mouse, Rat

Background

This gene encodes a type-I membrane protein that is related to beta-glucosidases. Reduced production of this protein has been observed in patients with chronic renal failure (CRF), and this may be one of the factors underlying the degenerative processes (e.g., arteriosclerosis, osteoporosis, and skin atrophy) seen in CRF. Also, mutations within this protein have been associated with ageing and bone loss.

Recommended Dilutions

WB 1:500 - 1:2000

Immunogen Information

Gene ID

9365

Swiss Prot

Q9UEF7

Immunogen

Recombinant fusion protein containing a sequence corresponding to amino acids 1-200 of human KL (NP_004786.2).

Synonyms

KLA; HFTC3; KL

Contact

 | www.abclonal.com

Product Information

Source

Rabbit

Isotype

IgG

Purification

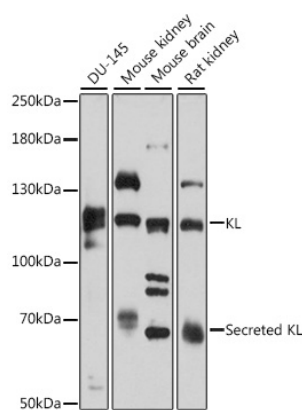
Affinity purification

Storage

Store at -20°C. Avoid freeze / thaw cycles.

Buffer: PBS with 0.01% thimerosal, 50% glycerol, pH7.3.

Validation Data



Western blot analysis of various lysates using KL Rabbit pAb (A12028) at 1:3000 dilution. Secondary antibody: HRP Goat Anti-Rabbit IgG (H+L) (A5014) at 1:10000 dilution. Lysates/proteins: 25µg per lane. Blocking buffer: 3% nonfat dry milk in TBST. Detection: ECL Basic Kit (RM00020). Exposure time: 5s.