

A11999

Leader in Biomolecular Solutions for Life Science



## Ser/thr-PP2A activator (PTPA) Rabbit pAb

Catalog No.: A11999

1 Publications

### Basic Information

#### Observed MW

40kDa

#### Calculated MW

41kDa

#### Category

Polyclonal Antibody

#### Applications

WB, ELISA

#### Cross-Reactivity

Human, Mouse, Rat

### Background

Protein phosphatase 2A is one of the four major Ser/Thr phosphatases and is implicated in the negative control of cell growth and division. Protein phosphatase 2A holoenzymes are heterotrimeric proteins composed of a structural subunit A, a catalytic subunit C, and a regulatory subunit B. The regulatory subunit is encoded by a diverse set of genes that have been grouped into the B/PR55, B'/PR61, and B''/PR72 families. These different regulatory subunits confer distinct enzymatic specificities and intracellular localizations to the holoenzyme. The product of this gene belongs to the B' family. This gene encodes a specific phosphotyrosyl phosphatase activator of the dimeric form of protein phosphatase 2A. Alternative splicing results in multiple transcript variants encoding different isoforms.

### Recommended Dilutions

WB 1:500 - 1:2000

### Immunogen Information

#### Gene ID

5524

#### Swiss Prot

Q15257

#### Immunogen

Recombinant fusion protein containing a sequence corresponding to amino acids 58-240 of human Ser/thr-PP2A activator (PTPA) (NP\_821068.1).

#### Synonyms

PP2A; PR53; PPP2R4; Ser/thr-PP2A activator (PTPA)

### Contact



[www.abclonal.com](http://www.abclonal.com)

### Product Information

#### Source

Rabbit

#### Isotype

IgG

#### Purification

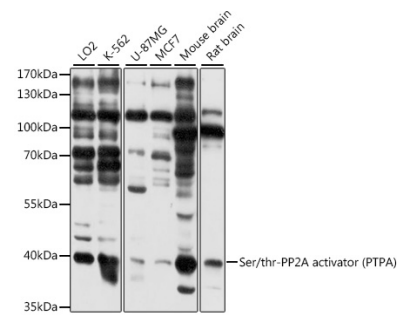
Affinity purification

#### Storage

Store at -20°C. Avoid freeze / thaw cycles.

Buffer: PBS with 0.01% thimerosal, 50% glycerol, pH7.3.

# Validation Data



Western blot analysis of various lysates using Ser/thr-PP2A activator (PTPA) Rabbit pAb (A11999) at 1:3000 dilution.  
Secondary antibody: HRP Goat Anti-Rabbit IgG (H+L) (AS014) at 1:10000 dilution.  
Lysates/proteins: 25µg per lane.  
Blocking buffer: 3% nonfat dry milk in TBST.  
Detection: ECL Basic Kit (RM00020).  
Exposure time: 20s.