

A11976

Leader in Biomolecular Solutions for Life Science



SLC5A1 Rabbit pAb

Catalog No.: A11976

15 Publications

Basic Information

Observed MW

74kDa

Calculated MW

73kDa

Category

Polyclonal Antibody

Applications

WB, ELISA

Cross-Reactivity

Human

Background

This gene encodes a member of the sodium-dependent glucose transporter (SGLT) family. The encoded integral membrane protein is the primary mediator of dietary glucose and galactose uptake from the intestinal lumen. Mutations in this gene have been associated with glucose-galactose malabsorption. Multiple transcript variants encoding different isoforms have been found for this gene.

Recommended Dilutions

WB 1:500 - 1:1000

Immunogen Information

Gene ID

6523

Swiss Prot

P13866

Immunogen

A synthetic peptide corresponding to a sequence within amino acids 400-500 of human SLC5A1 (NP_000334.1).

Synonyms

NAGT; SGLT1; SGLT-1; D22S675; SLC5A1

Contact



www.abclonal.com

Product Information

Source

Rabbit

Isotype

IgG

Purification

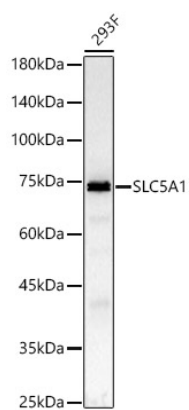
Affinity purification

Storage

Store at -20°C. Avoid freeze / thaw cycles.

Buffer: PBS with 0.05% proclin300, 50% glycerol, pH7.3.

Validation Data



Western blot analysis of 293F, using SLC5A1 Rabbit pAb (A11976) at 1:1000 dilution.
Secondary antibody: HRP Goat Anti-Rabbit IgG (H+L) (AS014) at 1:10000 dilution.
Lysates/proteins: 25ug per lane.
Blocking buffer: 3% nonfat dry milk in TBST.
Detection: ECL Basic Kit (RM00020).
Exposure time: 45s.