

A1195

Leader in Biomolecular Solutions for Life Science



PDGFB Rabbit pAb

Catalog No.: A1195

5 Publications

Basic Information

Observed MW

27kDa

Calculated MW

27kDa

Category

Mouse Monoclonal Antibody

Applications

WB, IHC-P, IF/ICC, ELISA

Cross-Reactivity

Human, Rat

Background

This gene encodes a member of the protein family comprised of both platelet-derived growth factors (PDGF) and vascular endothelial growth factors (VEGF). The encoded preproprotein is proteolytically processed to generate platelet-derived growth factor subunit B, which can homodimerize, or alternatively, heterodimerize with the related platelet-derived growth factor subunit A. These proteins bind and activate PDGF receptor tyrosine kinases, which play a role in a wide range of developmental processes. Mutations in this gene are associated with meningioma. Reciprocal translocations between chromosomes 22 and 17, at sites where this gene and that for collagen type 1, alpha 1 are located, are associated with dermatofibrosarcoma protuberans, a rare skin tumor. Alternative splicing results in multiple transcript variants.

Recommended Dilutions

WB	1:500 - 1:1000
IHC-P	1:50 - 1:200
IF/ICC	1:50 - 1:200

Immunogen Information

Gene ID

5155

Swiss Prot

P01127

Immunogen

A synthetic peptide corresponding to a sequence within amino acids 140-241 of human PDGFB (NP_002599.1).

Synonyms

SIS; SSV; IBGC5; PDGF2; c-sis; PDGF-2; PDGFB

Contact



www.abclonal.com

Product Information

Source

Rabbit

Isotype

IgG

Purification

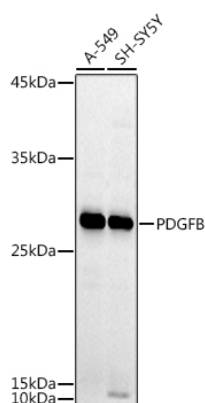
Affinity purification

Storage

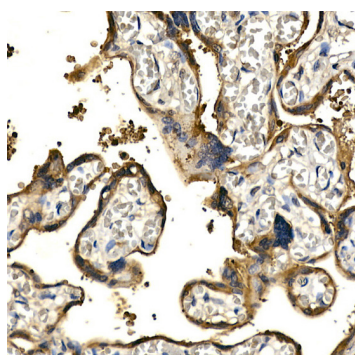
Store at -20°C. Avoid freeze / thaw cycles.

Buffer: PBS with 0.05% proclin300, 50% glycerol, pH7.3.

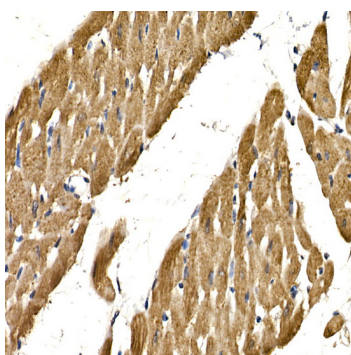
Validation Data



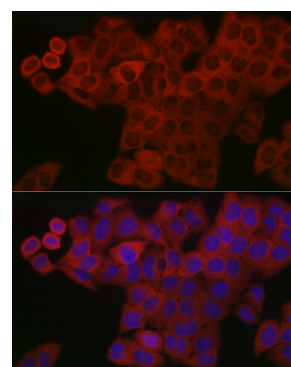
Western blot analysis of various lysates using PDGFB Rabbit pAb (A1195) at 1:1000 dilution.
 Secondary antibody: HRP Goat Anti-Rabbit IgG (H+L) (AS014) at 1:10000 dilution.
 Lysates/proteins: 25µg per lane.
 Blocking buffer: 3% nonfat dry milk in TBST.
 Detection: ECL Basic Kit (RM00020).
 Exposure time: 30s.



Immunohistochemistry analysis of PDGFB in paraffin-embedded human placenta using PDGFB Rabbit pAb (A1195) at dilution of 1:100 (40x lens). Perform high pressure antigen retrieval with 10 mM citrate buffer pH 6.0 before commencing with IHC staining protocol.



Immunohistochemistry analysis of PDGFB in paraffin-embedded rat heart using PDGFB Rabbit pAb (A1195) at dilution of 1:100 (40x lens). Perform high pressure antigen retrieval with 10 mM citrate buffer pH 6.0 before commencing with IHC staining protocol.



Immunofluorescence analysis of HeLa cells using PDGFB Rabbit pAb (A1195) at dilution of 1:100 (40x lens). Secondary antibody: Cy3 Goat Anti-Rabbit IgG (H+L) (AS007) at 1:500 dilution. Blue: DAPI for nuclear staining.