

# Heme Oxygenase 1 (HO-1/HMOX1) Rabbit pAb

Catalog No.: A11919 **5 Publications**

## Basic Information

### Observed MW

30kDa

### Calculated MW

33kDa

### Category

Primary antibody

### Applications

ELISA, WB

### Cross-Reactivity

Mouse, Rat

## Background

Heme oxygenase, an essential enzyme in heme catabolism, cleaves heme to form biliverdin, which is subsequently converted to bilirubin by biliverdin reductase, and carbon monoxide, a putative neurotransmitter. Heme oxygenase activity is induced by its substrate heme and by various nonheme substances. Heme oxygenase occurs as 2 isozymes, an inducible heme oxygenase-1 and a constitutive heme oxygenase-2. HMOX1 and HMOX2 belong to the heme oxygenase family.

## Recommended Dilutions

**WB** 1:500 - 1:2000

## Immunogen Information

### Gene ID

3162

### Swiss Prot

P09601

### Immunogen

Recombinant fusion protein containing a sequence corresponding to amino acids 1-288 of human Heme Oxygenase 1 (HO-1/HMOX1) (NP\_002124.1).

### Synonyms

HO-1; HSP32; HMOX1D; bK286B10; Heme Oxygenase 1 (HO-1/HMOX1)

## Contact

 | [www.abclonal.com](http://www.abclonal.com)

## Product Information

### Source

Rabbit

### Isotype

IgG

### Purification

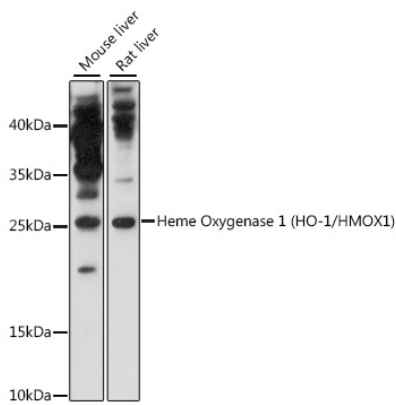
Affinity purification

### Storage

Store at -20°C. Avoid freeze / thaw cycles.

Buffer: PBS with 0.01% thimerosal, 50% glycerol, pH7.3.

# Validation Data



Western blot analysis of various lysates using Heme Oxygenase 1 (HO-1/HMOX1) Rabbit pAb (A11919) at 1:1000 dilution.  
Secondary antibody: HRP Goat Anti-Rabbit IgG (H+L) (A5014) at 1:10000 dilution.  
Lysates/proteins: 25µg per lane.  
Blocking buffer: 3% nonfat dry milk in TBST.  
Detection: ECL Basic Kit (RM00020).  
Exposure time: 30s.